

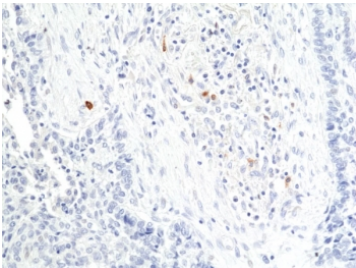
## Granzyme B Antibody [clone RM441] (R20456)

Catalog No.	Formulation	Size
R20456-0.1ML	Antibody in PBS with 50% glycerol, 1% BSA and 0.09% sodium azide	100 ul

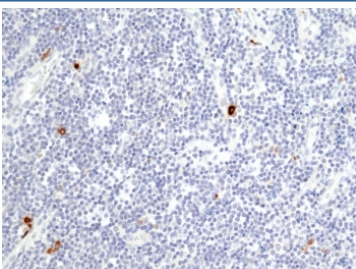
Recombinant **RABBIT MONOCLONAL**

[Bulk quote request](#)

<b>Availability</b>	1-3 business days
<b>Species Reactivity</b>	Human
<b>Format</b>	Purified
<b>Host</b>	Rabbit
<b>Clonality</b>	Recombinant Rabbit Monoclonal
<b>Isotype</b>	Rabbit IgG
<b>Clone Name</b>	RM441
<b>Purity</b>	Protein A purified from animal origin-free supernatant
<b>UniProt</b>	P10144
<b>Localization</b>	Cytoplasmic
<b>Applications</b>	Immunohistochemistry (FFPE) : 1:100-1:200
<b>Limitations</b>	This recombinant Granzyme B antibody is available for research use only.



IHC staining of FFPE human lung squamous carcinoma tissue with recombinant Granzyme B antibody at 1:200.



IHC staining of FFPE human tonsil tissue with recombinant Granzyme B antibody at 1:200.

## Description

This antibody reacts to Granzyme B.

## Application Notes

The stated application concentrations are suggested starting points. Titration of the recombinant Granzyme B antibody may be required due to differences in protocols and secondary/substrate sensitivity.

## Immunogen

A peptide corresponding to the C-terminus of Granzyme B was used as the immunogen for the recombinant Granzyme B antibody.

## Storage

Store the recombinant Granzyme B antibody at -20oC.