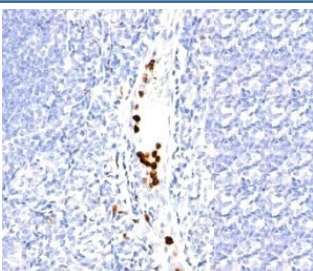


## Granulocyte Antibody [clone SPM250] (V9122)

Catalog No.	Formulation	Size
V9122-100UG	0.2 mg/ml in 1X PBS with 0.1 mg/ml BSA (US sourced) and 0.05% sodium azide	100 ug
V9122-20UG	0.2 mg/ml in 1X PBS with 0.1 mg/ml BSA (US sourced) and 0.05% sodium azide	20 ug
V9122SAF-100UG	1 mg/ml in 1X PBS; BSA free, sodium azide free	100 ug
V9122IHC-7ML	Prediluted in 1X PBS with 0.1 mg/ml BSA (US sourced) and 0.05% sodium azide; *For IHC use only*	7 ml

[Bulk quote request](#)

<b>Availability</b>	1-3 business days
<b>Species Reactivity</b>	Human
<b>Format</b>	Purified
<b>Host</b>	Mouse
<b>Clonality</b>	Monoclonal (mouse origin)
<b>Isotype</b>	Mouse IgG1, kappa
<b>Clone Name</b>	SPM250
<b>Purity</b>	Protein G affinity chromatography
<b>UniProt</b>	Not Known
<b>Localization</b>	Cytoplasmic
<b>Applications</b>	Immunohistochemistry (FFPE) : 1-2ug/ml for 30 min at RT (1) Prediluted IHC Only Format : incubate for 30 min at RT (2)
<b>Limitations</b>	This Granulocyte antibody is available for research use only.



Granulocyte Antibody Tonsil IHC. Immunohistochemistry testing of formalin-fixed, paraffin-embedded human tonsil stained with Granulocyte antibody (SPM250).

## Description

Granulocyte Antibody recognizes an unidentified antigen in the cytoplasm of mature granulocytes. It shows no reactivity with any other cell type in human tissues. Markers of myeloid cells are useful in the identification of different levels of cellular differentiation. SPM250 Ab reacts with early precursor and mature forms of human myeloid cells. This mAb is useful for the detection of myeloid leukemias and granulocytic sarcomas. It can be used as a marker of granulocytes in normal tissues or inflammatory processes.

For broader characterization of macrophage and granulocyte-associated immune cell populations, see our [Macrophage / Granulocyte Marker Antibody](#) page featuring clone BM-1 for innate immune lineage-associated tissue studies.

## Application Notes

The optimal dilution of the Granulocyte antibody for each application should be determined by the researcher.

1. Staining of formalin-fixed tissues requires boiling tissue sections in 10mM citrate buffer, pH 6.0, for 10-20 min followed by cooling at RT for 20 minutes.
2. The prediluted format is supplied in a dropper bottle and is optimized for use in IHC. After epitope retrieval step (if required), drip mAb solution onto the tissue section and incubate at RT for 30 min.

## Immunogen

Nuclei from pokeweed mitogen stimulated human peripheral blood lymphocytes were used as the immunogen for this Granulocyte antibody.

## Storage

Store the Granulocyte antibody at 2-8oC (with azide) or aliquot and store at -20oC or colder (without azide).