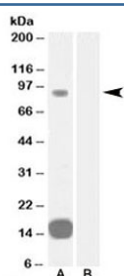


GRAF Antibody (R34665)

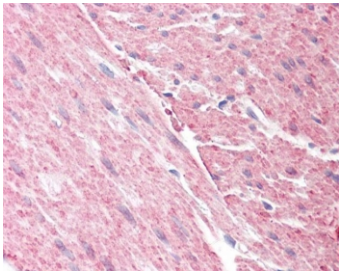
Catalog No.	Formulation	Size
R34665-100UG	0.5 mg/ml in 1X TBS, pH7.3, with 0.5% BSA (US sourced) and 0.02% sodium azide	100 ug

[Bulk quote request](#)

Availability	1-3 business days
Species Reactivity	Human
Predicted Reactivity	Cow, Dog, Mouse, Rat
Format	Antigen affinity purified
Host	Goat
Clonality	Polyclonal (goat origin)
Isotype	Goat Ig
Purity	Antigen affinity
Gene ID	23092
Localization	Cytoplasmic
Applications	Western Blot : 0.3-1ug/ml IHC (FFPE) : 3.75ug/ml ELISA (peptide) LOD : 1:64000
Limitations	This GRAF antibody is available for research use only.



Western blot testing of human heart lysate with GRAF antibody at 0.3ug/ml with [B] and without [A] blocking/immunizing peptide. Predicted molecular weight: ~92 kDa.



IHC testing of FFPE human colon tissue with GRAF antibody at 3.75ug/ml. Required HIER: steamed antigen retrieval with pH6 citrate buffer; AP-staining.

Description

Additional name(s) for this target protein: GTPase regulator associated with focal adhesion kinase, Rho GTPase activating protein 26; ARHGAP26

Application Notes

Optimal dilution of the GRAF antibody should be determined by the researcher.

Immunogen

Amino acids KTGLIPENYVEFL were used as the immunogen for this GRAF antibody.

Storage

Aliquot and store the GRAF antibody at -20oC.