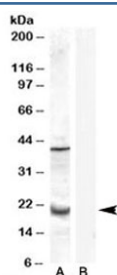


GPX7 Antibody (Center Region) (R33292)

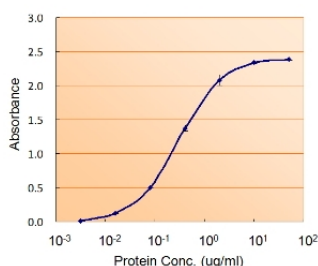
Catalog No.	Formulation	Size
R33292-100UG	0.5 mg/ml in 1X TBS, pH7.3, with 0.5% BSA (US sourced) and 0.02% sodium azide	100 ug

[Bulk quote request](#)

Availability	1-3 business days
Species Reactivity	Human
Format	Antigen affinity purified
Clonality	Polyclonal (goat origin)
Isotype	Goat Ig
Purity	Antigen affinity
Gene ID	2882
Applications	Western Blot : 0.3-1ug/ml ELISA (peptide) LOD : 1:32000
Limitations	This GPX7 antibody is available for research use only.



Western blot testing of human prostate lysate with GPX7 antibody at 0.3ug/ml with [B] and without [A] blocking/immunizing peptide. The expected ~20 kDa band and the additional ~40 kDa band are both blocked by the immunizing peptide.



Sandwich ELISA using GPX7 antibody at 5ug/ml as the detect.

Description

Additional name(s) for this target protein: Glutathione peroxidase 7

Application Notes

Optimal dilution of the GPX7 antibody should be determined by the researcher.

Immunogen

Amino acids CNQFGQQEPDSNK were used as the immunogen for this GPX7 antibody.

Storage

Aliquot and store the GPX7 antibody at -20oC.