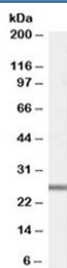


GPX3 Antibody (R34887)

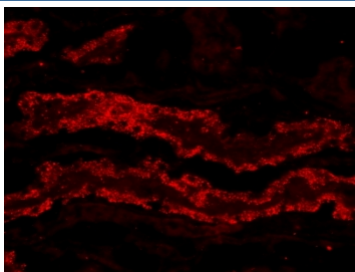
Catalog No.	Formulation	Size
R34887-100UG	0.5 mg/ml in 1X TBS, pH7.3, with 0.5% BSA (US sourced) and 0.02% sodium azide	100 ug

[Bulk quote request](#)

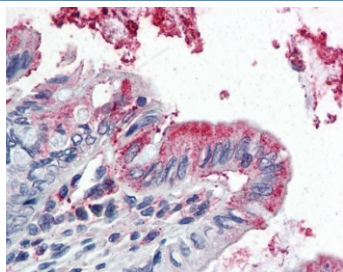
Availability	1-3 business days
Species Reactivity	Human, Mouse, Pig
Predicted Reactivity	Rat, Dog
Format	Antigen affinity purified
Host	Goat
Clonality	Polyclonal (goat origin)
Isotype	Goat Ig
Purity	Antigen affinity
Gene ID	2878
Localization	Cytoplasmic, nuclear
Applications	Western Blot : 1-3ug/ml IHC (FFPE) : 5ug/ml IHC (Frozen) : 20ug/ml ELISA (peptide) LOD : 1:1000
Limitations	This GPX3 antibody is available for research use only.



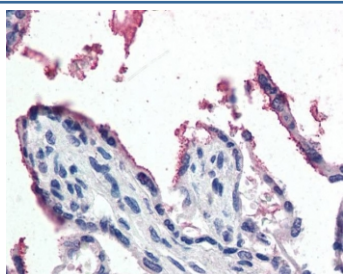
Western blot testing of mouse heart lysate with GPX3 antibody at 1ug/ml. Expected molecular weight: 23-26 kDa.



IHC staining of PFA-perfused cryosection of pig kidney with GPX3 antibody at 20ug/ml. HIER: microwave with pH3 citrate buffer, CY3-staining.



IHC testing of FFPE human colon tissue with GPX3 antibody at 5ug/ml. Required HIER: steamed antigen retrieval with pH6 citrate buffer; AP-staining.



IHC testing of FFPE human placenta tissue with GPX3 antibody at 5ug/ml. Required HIER: steamed antigen retrieval with pH6 citrate buffer; AP-staining.

Description

Additional name(s) for this target protein: Glutathione peroxidase 3, GPx-P, GSHPx-3, GSHPx-P

Application Notes

Optimal dilution of the GPX3 antibody should be determined by the researcher.

1. This GPX3 antibody may cross react with GPX5 (epididymis-specific) and GPX6 (olfactory epithelium-specific).

Immunogen

Amino acids NQFGKQEPGENSE were used as the immunogen for this GPX3 antibody.

Storage

Aliquot and store the GPX3 antibody at -20oC.

