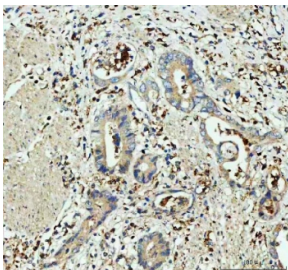


GPX1 Antibody / Glutathione Peroxidase 1 (R31616)

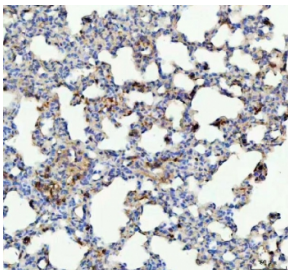
Catalog No.	Formulation	Size
R31616	0.5mg/ml if reconstituted with 0.2ml sterile DI water	100 ug

[Bulk quote request](#)

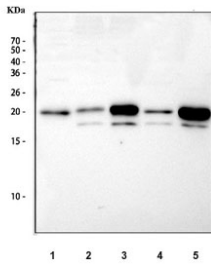
Availability	1-3 business days
Species Reactivity	Human, Mouse, Rat
Format	Antigen affinity purified
Host	Rabbit
Clonality	Polyclonal (rabbit origin)
Isotype	Rabbit IgG
Purity	Antigen affinity
Buffer	Lyophilized from 1X PBS with 2% Trehalose
UniProt	P07203
Localization	Cytoplasm
Applications	Western Blot : 0.5-1ug/ml Immunohistochemistry (FFPE) : 2-5ug/ml
Limitations	This GPX1 antibody is available for research use only.



IHC staining of FFPE human colorectal adenocarcinoma tissue with GPX1 antibody.
HIER: boil tissue sections in pH8 EDTA for 20 min and allow to cool before testing.



IHC staining of FFPE rat lung tissue with GPX1 antibody. HIER: boil tissue sections in pH8 EDTA for 20 min and allow to cool before testing.



Western blot testing 1) human ThP-1, 2) rat lung, 3) rat liver, 4) mouse lung and 5) mouse liver lysate with GPX1 antibody. Predicted molecular weight ~22 kDa.

Description

Glutathione peroxidase 1, also known as, GPX-1 is an enzyme that in humans is encoded by the GPX1 gene. It is mapped to 3p21.31. This gene encodes a member of the glutathione peroxidase family consisting of eight known glutathione peroxidases (Gpx1-8) in humans. Glutathione peroxidase functions in the detoxification of hydrogen peroxide, and is one of the most important antioxidant enzymes in humans. It has been reported that the protein encoded by this gene protects from CD95-induced apoptosis in cultured breast cancer cells and inhibits 5-lipoxygenase in blood cells, and its overexpression delays endothelial cell growth and increases resistance to toxic challenges. GPX1 is one of only a few proteins known in higher vertebrates to contain selenocysteine, which occurs at the active site of glutathione peroxidase and is coded by the nonsense (stop) codon TGA.

Application Notes

The stated application concentrations are suggested starting amounts. Titration of the GPX1 antibody may be required due to differences in protocols and secondary/substrate sensitivity.

Immunogen

An amino acid sequence from the middle region of human Glutathione peroxidase 1 (EVNGAGAHPLFAFLREALPAPSDDATALMTD) was used as the immunogen for this GPX1 antibody.

Storage

After reconstitution, the GPX1 antibody can be stored for up to one month at 4°C. For long-term, aliquot and store at -20°C. Avoid repeated freezing and thawing.