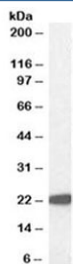


GPX Antibody (R35578)

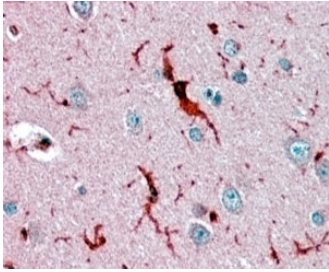
Catalog No.	Formulation	Size
R35578-100UG	0.5 mg/ml in 1X TBS, pH7.3, with 0.5% BSA (US sourced) and 0.02% sodium azide	100 ug

[Bulk quote request](#)

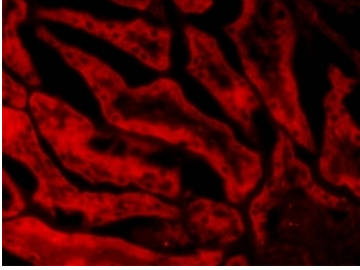
Availability	1-3 business days
Species Reactivity	Human, Pig
Format	Antigen affinity purified
Host	Goat
Clonality	Polyclonal (goat origin)
Isotype	Goat Ig
Purity	Antigen affinity
Gene ID	2876
Localization	Cytoplasmic
Applications	Western Blot : 1-3ug/ml Immunohistochemistry (FFPE) : 3-5ug/ml Immunohistochemistry (Frozen) : 20ug/ml ELISA (peptide) LOD : 1:32000
Limitations	This GPX antibody is available for research use only.



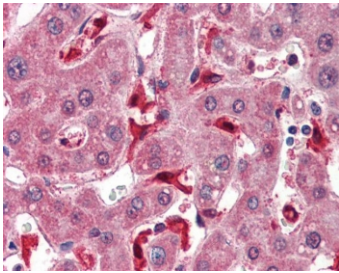
Western blot testing of human liver lysate with GPX antibody at 1ug/ml. Predicted molecular weight ~22 kDa.



IHC staining of FFPE human cerebral cortex with GPX antibody at 3.8ug/ml. HIER: steamed with pH6 citrate buffer, AP-staining.



IHC staining of a PFA-perfused cryosection of porcine kidney with GPX antibody at 20ug/ml. HIER: microwave with pH3 citrate buffer, CY3-staining.



IHC staining of FFPE human liver with GPX antibody at 3.8ug/ml. HIER: steamed with pH6 citrate buffer, AP-staining.

Description

Additional name(s) for this target protein: Glutathione Peroxidase 1

Application Notes

Optimal dilution of the GPX antibody should be determined by the researcher.

Immunogen

Amino acids REALPAPSDDATA were used as the immunogen for this GPX antibody.

Storage

Aliquot and store the GPX antibody at -20°C.