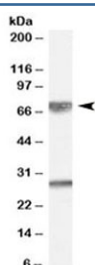


GPSM2 Antibody (R34903)

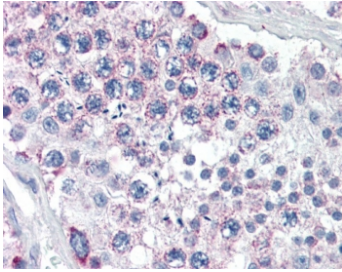
Catalog No.	Formulation	Size
R34903-100UG	0.5 mg/ml in 1X TBS, pH7.3, with 0.5% BSA (US sourced) and 0.02% sodium azide	100 ug

[Bulk quote request](#)

Availability	1-3 business days
Species Reactivity	Human
Predicted Reactivity	Dog
Format	Antigen affinity purified
Host	Goat
Clonality	Polyclonal (goat origin)
Isotype	Goat Ig
Purity	Antigen affinity
Gene ID	29899
Localization	Cytoplasmic
Applications	Western Blot : 0.01-0.03ug/ml IHC (FFPE) : 5ug/ml ELISA (peptide) LOD : 1:64000
Limitations	This GPSM2 antibody is available for research use only.



Western blot testing of human cerebellum lysate with GPSM2 antibody at 0.01ug/ml. Predicted molecular weight: ~76 kDa. Both observed bands are blocked by addition of the immunizing peptide.



IHC testing of FFPE human testis tissue with GPSM2 antibody at 5ug/ml. Required HIER: steamed antigen retrieval with pH6 citrate buffer; AP-staining.

Description

Additional name(s) for this target protein: G-protein signalling modulator 2

Application Notes

Optimal dilution of the GPSM2 antibody should be determined by the researcher.

Immunogen

Amino acids NRLKGKKYKTNSSTK were used as the immunogen for this GPSM2 antibody.

Storage

Aliquot and store the GPSM2 antibody at -20oC.