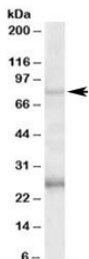


GPRIN3 Antibody (R36203)

Catalog No.	Formulation	Size
R36203-100UG	0.5 mg/ml in 1X TBS, pH7.3, with 0.5% BSA (US sourced) and 0.02% sodium azide	100 ug

[Bulk quote request](#)

Availability	1-3 business days
Species Reactivity	Human
Predicted Reactivity	Cow
Format	Antigen affinity purified
Host	Goat
Clonality	Polyclonal (goat origin)
Isotype	Goat Ig
Purity	Antigen affinity
Gene ID	285513
Applications	Western Blot : 1-3ug/ml ELISA (peptide) LOD : 1:4000
Limitations	This GPRIN3 antibody is available for research use only.



Western blot testing of human hippocampus lysate with GPRIN3 antibody at 1 ug/ml. The expected ~80kDa band and the additional ~26kDa band are both blocked by the immunizing peptide.

Description

Additional name(s) for this target protein: G protein-regulated inducer of neurite outgrowth 3

Application Notes

Optimal dilution of the GPRIN3 antibody should be determined by the researcher.

Immunogen

Amino acids TLEENRQTKT were used as the immunogen for this GPRIN3 antibody.

Storage

Aliquot and store the GPRIN3 antibody at -20oC.