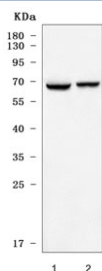


GPR50 Antibody / Melatonin-related receptor (RQ7177)

Catalog No.	Formulation	Size
RQ7177	0.5mg/ml if reconstituted with 0.2ml sterile DI water	100 ug

Bulk quote request

Availability	1-3 business days
Species Reactivity	Human, Mouse
Format	Antigen affinity purified
Clonality	Polyclonal (rabbit origin)
Isotype	Rabbit IgG
Purity	Antigen affinity purified
Buffer	Lyophilized from 1X PBS with 2% Trehalose
UniProt	Q13585
Applications	Western Blot : 0.5-1ug/ml Direct ELISA : 0.1-0.5ug/ml
Limitations	This GPR50 antibody is available for research use only.



Western blot testing of mouse 1) testis and 2) brain tissue lysate with GPR50 antibody. Predicted molecular weight ~67 kDa.

Description

G protein-coupled receptor 50 is a protein which in humans is encoded by the GPR50 gene. This gene product belongs to the G-protein coupled receptor 1 family. Even though this protein shares similarity with the melatonin receptors, it does not bind melatonin, however, it inhibits melatonin receptor 1A function through heterodimerization. Polymorphic variants of this gene have been associated with bipolar affective disorder in women.

Application Notes

Optimal dilution of the GPR50 antibody should be determined by the researcher.

Immunogen

Recombinant human protein (amino acids K214-S471) was used as the immunogen for the GPR50 antibody.

Storage

After reconstitution, the GPR50 antibody can be stored for up to one month at 4°C. For long-term, aliquot and store at -20°C. Avoid repeated freezing and thawing.