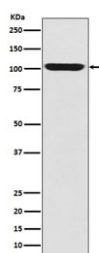


GPR49 Antibody / LGR5 [clone CHF-12] (RQ4782)

Catalog No.	Formulation	Size
RQ4782	Antibody in PBS with 0.02% sodium azide, 50% glycerol and 0.4-0.5mg/ml BSA	100 ul

[Bulk quote request](#)

Availability	1-2 weeks
Species Reactivity	Human
Format	Purified
Clonality	Rabbit Monoclonal
Isotype	Rabbit IgG
Clone Name	CHF-12
Purity	Affinity purified
UniProt	O75473
Applications	Western Blot : 1:500-1:2000
Limitations	This GPR49 antibody is available for research use only.



Western blot testing of human fetal skeletal muscle with GPR49 antibody. Predicted molecular weight ~100 kDa.

Description

'G-protein coupled receptor 49,' or 'Leucine-rich repeat-containing G-protein coupled receptor 5' is a receptor for R-spondins that potentiates the canonical Wnt signaling pathway and acts as a stem cell marker of the intestinal epithelium and the hair follicle. Upon binding to R-spondins (RSPO1, RSPO2, RSPO3 or RSPO4), associates with phosphorylated LRP6 and frizzled receptors that are activated by extracellular Wnt receptors, triggering the canonical Wnt signaling pathway to increase expression of target genes. In contrast to classical G-protein coupled receptors, does not activate heterotrimeric G-proteins to transduce the signal. Involved in the development and/or maintenance of the adult intestinal stem cells during postembryonic development. [UniProt]

Application Notes

Optimal dilution of the GPR49 antibody should be determined by the researcher.

Immunogen

A synthetic peptide specific to human GPR49 / LGR5 was used as the immunogen for the GPR49 antibody.

Storage

Store the GPR49 antibody at -20oC.