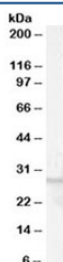


GPR40 Antibody (R33204)

Catalog No.	Formulation	Size
R33204-100UG	0.5 mg/ml in 1X TBS, pH7.3, with 0.5% BSA (US sourced) and 0.02% sodium azide	100 ug

[Bulk quote request](#)

Availability	1-3 business days
Species Reactivity	Human
Format	Antigen affinity purified
Host	Goat
Clonality	Polyclonal (goat origin)
Isotype	Goat Ig
Purity	Antigen affinity
Gene ID	2864
Applications	Western Blot : 0.01-0.03ug/ml ELISA (peptide) LOD : 1:16000
Limitations	This GPR40 antibody is available for research use only.



Western blot testing of human breast lysate with GPR40 antibody at 0.01ug/ml.
Predicted molecular weight ~31 kDa.

Description

Additional name(s) for this target protein: G protein-coupled receptor 40; FFAR1

Application Notes

Optimal dilution of the GPR40 antibody should be determined by the researcher.

Immunogen

Amino acids CAARTQGGKSQK were used as the immunogen for this GPR40 antibody.

Storage

Aliquot and store the GPR40 antibody at -20oC.