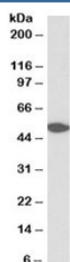


## GPR39 Antibody (R34156)

| Catalog No.  | Formulation   | Size   |
|--------------|---|--------|
| R34156-100UG | 0.5 mg/ml in 1X TBS, pH7.3, with 0.5% BSA (US sourced) and 0.02% sodium azide | 100 ug |

[Bulk quote request](#)

|                           |  |
|---------------------------|--|
| <b>Availability</b>       | 1-3 business days  |
| <b>Species Reactivity</b> | Human  |
| <b>Format</b>             | Antigen affinity purified                                  |
| <b>Host</b>               | Goat   |
| <b>Clonality</b>          | Polyclonal (goat origin)                                   |
| <b>Isotype</b>            | Goat Ig  |
| <b>Purity</b>             | Antigen affinity   |
| <b>Gene ID</b>            | 2863   |
| <b>Applications</b>       | Western Blot : 0.3-1ug/ml<br>ELISA (peptide) LOD : 1:64000 |
| <b>Limitations</b>        | This GPR39 antibody is available for research use only.    |



Western blot testing of human cerebellum lysate with GPR39 antibody at 0.3ug/ml.  
Predicted molecular weight: ~51kDa.

### Description

Additional name(s) for this target protein: G protein-coupled receptor 39

### Application Notes

Optimal dilution of the GPR39 antibody should be determined by the researcher.

### Immunogen

Amino acids HAHSTTDSARFVQRP were used as the immunogen for this GPR39 antibody.

## **Storage**

Aliquot and store the GPR39 antibody at -20°C.