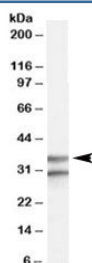


## GPR3 Antibody (R34735)

Catalog No.	Formulation	Size
R34735-100UG	0.5 mg/ml in 1X TBS, pH7.3, with 0.5% BSA (US sourced) and 0.02% sodium azide	100 ug

[Bulk quote request](#)

Availability	1-3 business days
Species Reactivity	Human
Predicted Reactivity	Dog, Mouse, Rat
Format	Antigen affinity purified
Host	Goat
Clonality	Polyclonal (goat origin)
Isotype	Goat Ig
Purity	Antigen affinity
Gene ID	2827
Applications	Western Blot : 0.3-1ug/ml ELISA (peptide) LOD : 1:32000
Limitations	This GPR3 antibody is available for research use only.



Western blot testing of human brain frontal cortex lysate with GPR3 antibody at 0.3ug/ml. The expected ~35kDa band and the additional ~30kDa band are both blocked by the immunizing peptide.

## Description

Additional name(s) for this target protein: G protein-coupled receptor 3

## Application Notes

Optimal dilution of the GPR3 antibody should be determined by the researcher.

## **Immunogen**

Amino acids LQRHLLPASH were used as the immunogen for this GPR3 antibody.

## **Storage**

Aliquot and store the GPR3 antibody at -20oC.