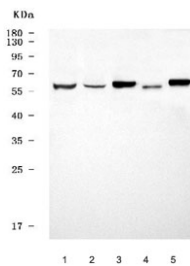


GPR161 Antibody (RQ7178)

Catalog No.	Formulation	Size
RQ7178	0.5mg/ml if reconstituted with 0.2ml sterile DI water	100 ug

Bulk quote request

Availability	1-3 business days
Species Reactivity	Human, Mouse, Rat
Format	Antigen affinity purified
Clonality	Polyclonal (rabbit origin)
Isotype	Rabbit IgG
Purity	Antigen affinity purified
Buffer	Lyophilized from 1X PBS with 2% Trehalose
UniProt	Q8N6U8
Applications	Western Blot : 0.5-1ug/ml
Limitations	This GPR161 antibody is available for research use only.



Western blot testing of 1) human SH-SY5Y, 2) human SiHa, 3) rat brain, 4) rat spleen and 5) mouse brain tissue lysate with GPR161 antibody. Predicted molecular weight ~59 kDa.

Description

G-protein coupled receptor 161 is a protein that in humans is encoded by the GPR161 gene. The protein encoded by this gene is an orphan G protein-coupled receptor whose ligand is unknown. This gene is overexpressed in triple-negative breast cancer, and disruption of this gene slows the proliferation of basal breast cancer cells. Therefore, this gene is a potential drug target for triple-negative breast cancer.

Application Notes

Optimal dilution of the GPR161 antibody should be determined by the researcher.

Immunogen

Amino acids LHVKAIEVHKSLDSYAASLAKAIEAEAKINL were used as the immunogen for the GPR161 antibody.

Storage

After reconstitution, the GPR161 antibody can be stored for up to one month at 4°C. For long-term, aliquot and store at -20°C. Avoid repeated freezing and thawing.