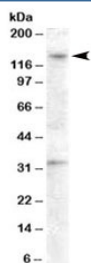


GPR125 Antibody (R33354)

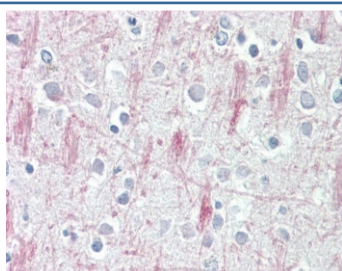
Catalog No.	Formulation	Size
R33354-100UG	0.5 mg/ml in 1X TBS, pH7.3, with 0.5% BSA (US sourced) and 0.02% sodium azide	100 ug

[Bulk quote request](#)

Availability	1-3 business days
Species Reactivity	Human
Format	Antigen affinity purified
Host	Goat
Clonality	Polyclonal (goat origin)
Isotype	Goat Ig
Purity	Antigen affinity
Gene ID	166647
Applications	Western Blot : 0.5-1.5ug/ml Immunohistochemistry (FFPE) : 3.75ug/ml ELISA (peptide) LOD : 1:8000
Limitations	This GPR125 antibody is available for research use only.



Western blot testing of human ovary lysate with GPR125 antibody at 0.5ug/ml. The expected ~140 kDa band and the additional ~33 kDa band are both blocked by the immunizing peptide.



IHC testing of FFPE human brain (cortex) tissue with GPR125 antibody at 3.75ug/ml. Required HIER: steamed antigen retrieval with pH6 citrate buffer; AP-staining.

Description

Additional name(s) for this target protein: G protein-coupled receptor 125

Application Notes

Optimal dilution of the GPR125 antibody should be determined by the researcher.

Immunogen

Amino acids CTNKSASSFKNS were used as the immunogen for this GPR125 antibody.

Storage

Aliquot and store the GPR125 antibody at -20oC.