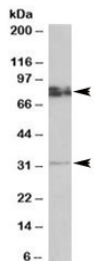


GPM6A Antibody (R35492)

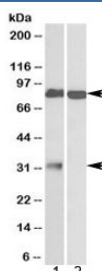
Catalog No.	Formulation	Size
R35492-100UG	0.5 mg/ml in 1X TBS, pH7.3, with 0.5% BSA (US sourced) and 0.02% sodium azide	100 ug

[Bulk quote request](#)

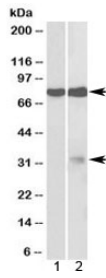
Availability	1-3 business days
Species Reactivity	Human, Mouse, Rat
Predicted Reactivity	Dog
Format	Antigen affinity purified
Host	Goat
Clonality	Polyclonal (goat origin)
Isotype	Goat Ig
Purity	Antigen affinity
Gene ID	2823
Applications	Western Blot : 0.5-2ug/ml ELISA (peptide) LOD : 1:32000
Limitations	This GPM6A antibody is available for research use only.



Western blot testing of rat brain lysate with GPM6A antibody at 0.5ug/ml. Predicted molecular weight: ~32/80kDa (unmodified/glycosylated).



Western blot testing of human 1) cerebellum and 2) olfactory bulb lysate with GPM6A antibody at 1ug/ml. Predicted molecular weight: ~32/80kDa (unmodified/glycosylated).



Western blot testing of 1) fetal mouse brain and 2) rat brain lysate with GPM6A antibody at 2ug/ml. Predicted molecular weight: ~32/80kDa (unmodified/glycosylated).

Description

Additional name(s) for this target protein: Glycoprotein M6A

Application Notes

Optimal dilution of the GPM6A antibody should be determined by the researcher.

1. Not suitable for use in immunofluorescence.

Immunogen

Amino acids QTYFEMARTAGD were used as the immunogen for this GPM6A antibody.

Storage

Aliquot and store the GPM6A antibody at -20oC.