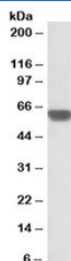


GPI Antibody (R35603)

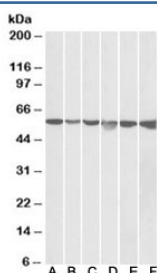
Catalog No.	Formulation	Size
R35603-100UG	0.5 mg/ml in 1X TBS, pH7.3, with 0.5% BSA (US sourced) and 0.02% sodium azide	100 ug

[Bulk quote request](#)

Availability	1-3 business days
Species Reactivity	Human
Predicted Reactivity	Pig
Format	Antigen affinity purified
Clonality	Polyclonal (goat origin)
Isotype	Goat Ig
Purity	Antigen affinity
Gene ID	2821
Localization	Cytoplasmic
Applications	Western Blot : 0.1-0.3ug/ml ELISA (peptide) LOD : 1:128000
Limitations	This GPI antibody is available for research use only.



Western blot testing of human heart lysate with GPI antibody at 0.3ug/ml. Predicted molecular weight ~63 kDa.



Western blot testing of HeLa (A), A431 (B), A549 (C), MCF7 (D), Jurkat (E) and K562 (F) lysates with GPI antibody at 0.05ug/ml. Predicted molecular weight ~63 kDa, observed here at ~55 kDa.

Description

Additional name(s) for this target protein: Glucose phosphate isomerase; Glucose-6-phosphate isomerase; Neuroleukin

Application Notes

Optimal dilution of the GPI antibody should be determined by the researcher.

Immunogen

Amino acids RERMFNGEKINYT were used as the immunogen for this GPI antibody.

Storage

Aliquot and store the GPI antibody at -20oC.