

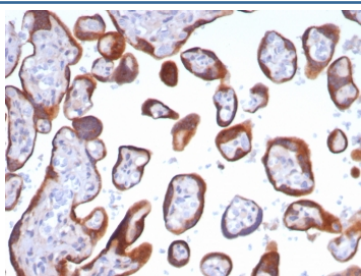
GPC3 Antibody / Glypican 3 [clone GPC3/8148R] (V5356)

Catalog No.	Formulation	Size
V5356-100UG	0.2 mg/ml in 1X PBS with 0.1 mg/ml BSA (US sourced), 0.05% sodium azide	100 ug
V5356-20UG	0.2 mg/ml in 1X PBS with 0.1 mg/ml BSA (US sourced), 0.05% sodium azide	20 ug
V5356SAF-100UG	1 mg/ml in 1X PBS; BSA free, sodium azide free	100 ug

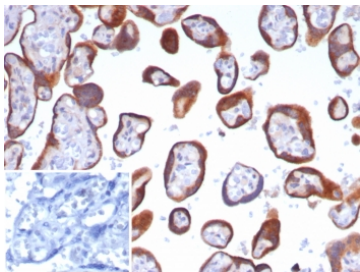
Recombinant **RABBIT MONOCLONAL**

[Bulk quote request](#)

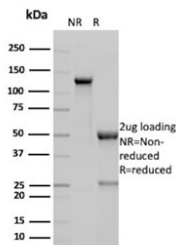
Availability	1-3 business days
Species Reactivity	Human
Format	Purified
Host	Rabbit
Clonality	Recombinant Rabbit Monoclonal
Isotype	Rabbit IgG, kappa
Clone Name	GPC3/8148R
Purity	Protein A affinity
UniProt	P51654
Localization	Cytoplasm
Applications	Immunohistochemistry (FFPE) : 1-2ug/ml for 30 min at RT
Limitations	This GPC3 antibody is available for research use only.



IHC staining of FFPE human placental tissue with Glypican-3 antibody (clone GPC3/8148R). HIER: boil tissue sections in pH 9 10mM Tris with 1mM EDTA for 20 min and allow to cool before testing.



IHC staining of FFPE human placental tissue with Glypican-3 antibody (clone GPC3/8148R). Inset: PBS used in place of primary Ab (secondary Ab negative control).
HIER: boil tissue sections in pH 9 10mM Tris with 1mM EDTA for 20 min and allow to cool before testing.



SDS-PAGE analysis of purified, BSA-free GPC3 antibody (clone GPC3/8148R) as confirmation of integrity and purity.

Description

Glypican-3 (GPC3) is a glycosylphosphatidyl inositol-anchored membrane protein, which may also be found in a secreted form.

Application Notes

Optimal dilution of the GPC3 antibody should be determined by the researcher.

Immunogen

A recombinant partial protein sequence (within amino acids 400-550) from the human protein was used as the immunogen for the GPC3 antibody.

Storage

Aliquot the GPC3 antibody and store frozen at -20°C or colder. Avoid repeated freeze-thaw cycles.