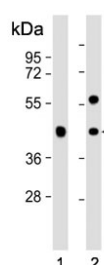


GPA33 Antibody / Cell surface A33 antigen (F55008)

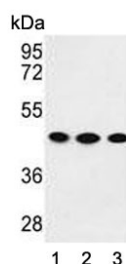
Catalog No.	Formulation	Size
F55008-0.4ML	In 1X PBS, pH 7.4, with 0.09% sodium azide	0.4 ml
F55008-0.08ML	In 1X PBS, pH 7.4, with 0.09% sodium azide	0.08 ml

Bulk quote request

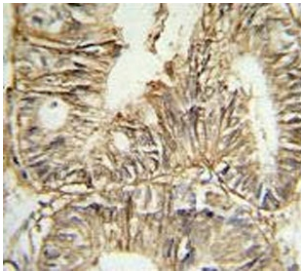
Availability	1-3 business days
Species Reactivity	Human
Format	Purified
Clonality	Polyclonal (rabbit origin)
Isotype	Rabbit Ig
Purity	Antigen affinity purified
UniProt	Q99795
Applications	Flow Cytometry : 1:10-1:50 (1x10 ⁶ cells) Immunohistochemistry (FFPE) : 1:50-1:100 Western Blot : 1:500-1:1000
Limitations	This GPA33 antibody is available for research use only.



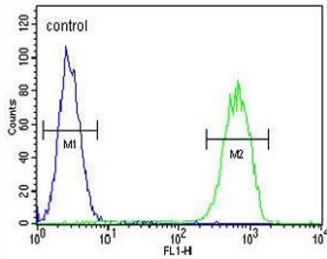
Western blot testing of human 1) 293T and 2) HT-29 cell lysate with GPA33 antibody. Expected molecular weight: 33-43 kDa depending on glycosylation level.



Western blot testing of human 1) K562, 2) HEK293 and 3) MDA-MB-231 cell lysate with GPA33 antibody. Expected molecular weight: 33-43 kDa depending on glycosylation level.



IHC testing of FFPE human colon carcinoma tissue with GPA33 antibody. HIER: steam section in pH6 citrate buffer for 20 min and allow to cool prior to staining.



Flow cytometry testing of human MDA-MB-231 cells with GPA33 antibody; Blue=isotype control, Green= GPA33 antibody.

Description

GPA33 is a cell surface antigen that is expressed in greater than 95% of human colon cancers. It may play a role in cell-cell recognition and signaling.

Application Notes

The stated application concentrations are suggested starting points. Titration of the GPA33 antibody may be required due to differences in protocols and secondary/substrate sensitivity.

Immunogen

A portion of amino acids 264-293 from the human protein was used as the immunogen for the GPA33 antibody.

Storage

Aliquot the GPA33 antibody and store frozen at -20oC or colder. Avoid repeated freeze-thaw cycles.