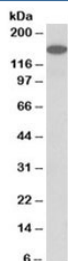


## GP135 Antibody / Contactin 1 (R35512)

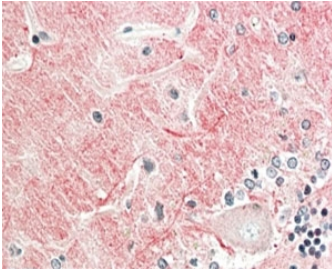
Catalog No.	Formulation	Size
R35512-100UG	0.5 mg/ml in 1X TBS, pH7.3, with 0.5% BSA (US sourced) and 0.02% sodium azide	100 ug

[Bulk quote request](#)

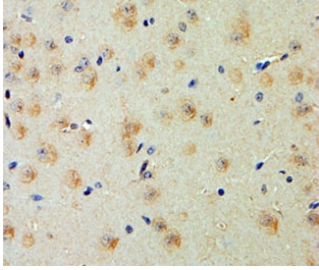
<b>Availability</b>	1-3 business days
<b>Species Reactivity</b>	Human, Mouse, Rat
<b>Predicted Reactivity</b>	Dog, Pig
<b>Format</b>	Antigen affinity purified
<b>Host</b>	Goat
<b>Clonality</b>	Polyclonal (goat origin)
<b>Isotype</b>	Goat Ig
<b>Purity</b>	Antigen affinity
<b>Gene ID</b>	1272
<b>Applications</b>	Western Blot : 1-3ug/ml Immunohistochemistry (FFPE) : 5-10ug/ml ELISA (peptide) LOD : 1:16000
<b>Limitations</b>	This GP135 antibody is available for research use only.



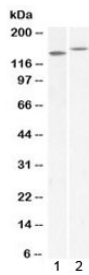
Western blot testing of human cerebellum lysate with GP135 antibody at 1ug/ml.  
Predicted molecular weight: ~113/135-150kDa (unmodified/glycosylated).



IHC staining of FFPE human cerebellum with GP135 antibody at 5ug/ml. HIER: steamed with pH6 citrate buffer, AP-staining.



IHC staining of FFPE mouse cerebral cortex with GP135 antibody at 5ug/ml. HIER: steamed with pH6 citrate buffer, AP-staining.



Western blot testing of 1) mouse brain and 2) rat brain lysate with GP135 antibody at 1ug/ml. Predicted molecular weight: ~113/135-150kDa (unmodified/glycosylated).

## Description

Additional name(s) for this target protein: Glycoprotein gp135, contactin 1, CNTN1

## Application Notes

Optimal dilution of the GP135 antibody should be determined by the researcher.

1. This GP135 antibody is specific for isoforms 1 and 2.

## Immunogen

Amino acids QVTSQEYSARLEN (internal region) were used as the immunogen for this Contactin 1 / GP135 antibody.

## Storage

Aliquot and store the GP135 antibody at -20oC.

