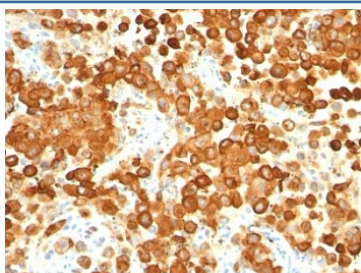


## gp100 Antibody Cocktail / PMEL17 [clone HMB45 + PMEL/783] (V2857)

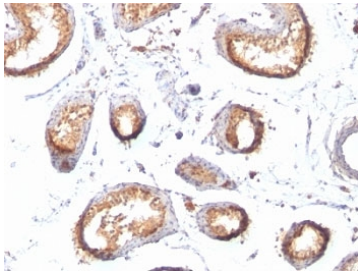
Catalog No.	Formulation	Size
V2857-100UG	0.2 mg/ml in 1X PBS with 0.1 mg/ml BSA (US sourced) and 0.05% sodium azide	100 ug
V2857-20UG	0.2 mg/ml in 1X PBS with 0.1 mg/ml BSA (US sourced) and 0.05% sodium azide	20 ug
V2857SAF-100UG	1 mg/ml in 1X PBS; BSA free, sodium azide free	100 ug
V2857IHC-7ML	Prediluted in 1X PBS with 0.1 mg/ml BSA (US sourced) and 0.05% sodium azide; *For IHC use only*	7 ml

**Bulk quote request**

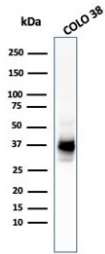
<b>Availability</b>	1-3 business days
<b>Species Reactivity</b>	Human
<b>Format</b>	Purified
<b>Clonality</b>	Monoclonal (mouse origin)
<b>Isotype</b>	Mouse IgG1, kappa
<b>Clone Name</b>	HMB45 + PMEL/783
<b>Purity</b>	Protein G affinity chromatography
<b>UniProt</b>	P40967
<b>Localization</b>	Cytoplasmic
<b>Applications</b>	Western Blot : 1-2ug/ml Immunohistochemistry (FFPE) : 0.5-1ug/ml for 30 min at RT (1)
<b>Limitations</b>	This gp100 antibody cocktail is available for research use only.



IHC: Formalin-fixed, paraffin-embedded human melanoma stained with gp100 antibody cocktail (HMB45 + PMEL/783). HIER: boil tissue sections in pH 9 10mM Tris with 1mM EDTA for 20 min and allow to cool before testing.



IHC: Formalin-fixed, paraffin-embedded human testis stained with gp100 antibody cocktail (HMB45 + PMEL/783). HIER: boil tissue sections in pH 9 10mM Tris with 1mM EDTA for 20 min and allow to cool before testing.



Western blot testing of human COLO-38 cell lysate with gp100 antibody cocktail (clones HMB45 + PMEL/783).

## Description

By immunohistochemistry, it specifically recognizes a protein in melanocytes and melanomas. This mAb reacts with junctional and blue nevus cells and variably with fetal and neonatal melanocytes. Intradermal nevi, normal adult melanocytes, and non-melanocytic cells are negative. It does not stain tumor cells of epithelial, lymphoid, glial, or mesenchymal origin. Metastatic amelanotic melanoma can often be confused with a variety of poorly differentiated carcinomas, large cell lymphomas, and sarcomas using H & E stains alone. It is also difficult to differentiate melanoma from spindle cell carcinomas and various types of mesenchymal neoplasms. This mAb stains fetal and neonatal melanocytes, junctional and blue nevus cells, and malignant melanoma. This mAb also stains Angiomyolipoma (PEComa).

The gp100 molecule is a 100kDa glycosylated protein that is cleaved into a small (26kDa) carboxy-terminal fragment and a larger amino- terminal section (60-64 kDa), which is subsequently cleaved to generate 26kDa and 34-38kDa.

## Application Notes

Optimal dilution of the gp100 antibody cocktail should be determined by the researcher.

1. The prediluted format is supplied in a dropper bottle and is optimized for use in IHC. After epitope retrieval step (if required), drip mAb solution onto the tissue section and incubate at RT for 30 min.

## Immunogen

Extract of pigmented melanoma metastases from lymph nodes (HMB45) and recombinant human protein (PMEL/783) were used as the immunogen for the gp100 antibody cocktail.

## Storage

Store the gp100 antibody cocktail at 2-8°C (with azide) or aliquot and store at -20°C or colder (without azide).

