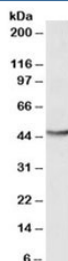


GOT2 Antibody (R35287)

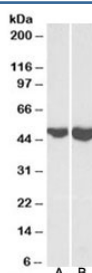
Catalog No.	Formulation	Size
R35287-100UG	0.5 mg/ml in 1X TBS, pH7.3, with 0.5% BSA (US sourced) and 0.02% sodium azide	100 ug

[Bulk quote request](#)

Availability	1-3 business days
Species Reactivity	Human, Mouse
Predicted Reactivity	Cow, Dog, Pig, Rat
Format	Antigen affinity purified
Host	Goat
Clonality	Polyclonal (goat origin)
Isotype	Goat Ig
Purity	Antigen affinity
Gene ID	2806
Applications	Western Blot : 0.3-1ug/ml ELISA (peptide) LOD : 1:8000
Limitations	This GOT2 antibody is available for research use only.



Western blot testing of HepG2 lysate with GOT2 antibody at 0.3ug/ml. Predicted molecular weight ~47kDa.



Western blot testing of mouse brain (A) and heart (B) lysates with GOT2 antibody at 0.1ug/ml. Predicted molecular weight ~47kDa.

Description

Additional name(s) for this target protein: Glutamic-oxaloacetic transaminase 2

Application Notes

Optimal dilution of the GOT2 antibody should be determined by the researcher.

Immunogen

Amino acids QGYRYYDPKTCGFD were used as the immunogen for this GOT2 antibody.

Storage

Aliquot and store the GOT2 antibody at -20oC.