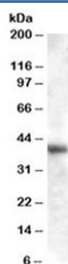


## GOT1 Antibody (R35783)

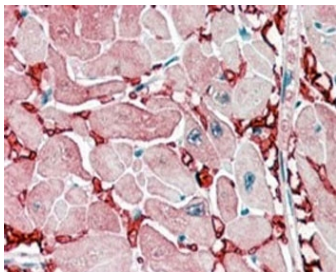
Catalog No.	Formulation	Size
R35783-100UG	0.5 mg/ml in 1X TBS, pH7.3, with 0.5% BSA (US sourced) and 0.02% sodium azide	100 ug

[Bulk quote request](#)

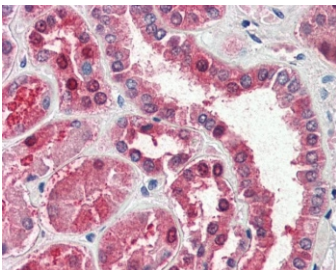
Availability	1-3 business days
Species Reactivity	Human
Predicted Reactivity	Rat
Format	Antigen affinity purified
Host	Goat
Clonality	Polyclonal (goat origin)
Isotype	Goat Ig
Purity	Antigen affinity
Gene ID	2805
Localization	Cytoplasmic
Applications	Western Blot : 0.01-0.03ug/ml Immunohistochemistry (FFPE) : 2-5ug/ml ELISA (peptide) LOD : 1:4000
Limitations	This GOT1 antibody is available for research use only.



Western blot testing of human liver lysate with GOT1 antibody at 0.01ug/ml. Predicted molecular weight 46 kDa but routinely observed from 40~46 kDa.



IHC staining of FFPE human heart with GOT1 antibody at 2.5ug/ml. HIER: steamed with pH6 citrate buffer, AP-staining. Strong staining of the capillary network between the myocardial fibers is seen (transverse section).



IHC staining of FFPE human kidney with GOT1 antibody at 5ug/ml. HIER: steamed with pH6 citrate buffer, AP-staining.

## Description

Additional name(s) for this target protein: Glutamic-oxaloacetic transaminase 1

## Application Notes

Optimal dilution of the GOT1 antibody should be determined by the researcher.

## Immunogen

Amino acids RSYRYWDAEKR were used as the immunogen for this GOT1 antibody.

## Storage

Aliquot and store the GOT1 antibody at -20oC.