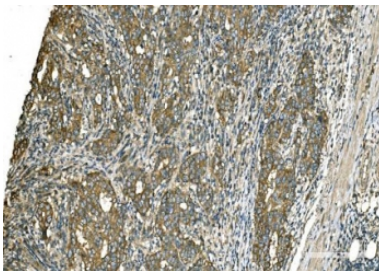


GOT1 Antibody / Glutamic-oxaloacetic transaminase 1 [clone 6B3B4] (RQ7636)

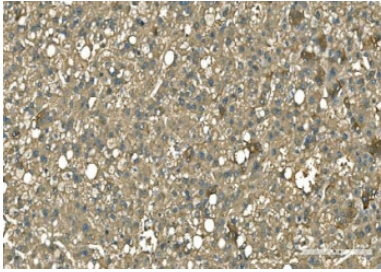
Catalog No.	Formulation	Size
RQ7636	0.5mg/ml if reconstituted with 0.2ml sterile DI water	100 ug

Bulk quote request

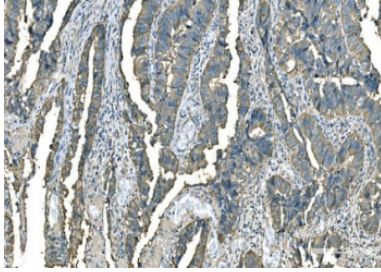
Availability	1-3 business days
Species Reactivity	Human, Mouse, Rat
Format	Antigen affinity purified
Host	Mouse
Clonality	Monoclonal (mouse origin)
Isotype	Mouse IgG2b
Clone Name	6B3B4
Purity	Antigen affinity purified
Buffer	Lyophilized from 1X PBS with 2% Trehalose
UniProt	P17174
Localization	Cytoplasmic
Applications	Western Blot : 0.5-1ug/ml Immunohistochemistry (FFPE) : 2-5ug/ml Flow Cytometry : 1-3ug/million cells
Limitations	This GOT1 antibody is available for research use only.



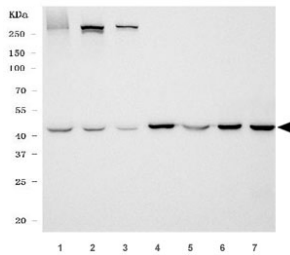
IHC staining of FFPE human renal pelvis squamous tissue with GOT1 antibody. HIER: boil tissue sections in pH8 EDTA for 20 min and allow to cool before testing.



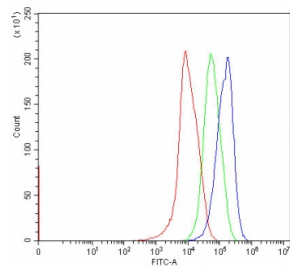
IHC staining of FFPE human liver cancer tissue with GOT1 antibody. HIER: boil tissue sections in pH8 EDTA for 20 min and allow to cool before testing.



IHC staining of FFPE human rectum adenocarcinoma cancer tissue with GOT1 antibody. HIER: boil tissue sections in pH8 EDTA for 20 min and allow to cool before testing.



Western blot testing of 1) human T-47D, 2) human HepG2, 3) human Caco-2, 4) rat brain, 5) rat liver, 6) mouse brain and 7) mouse liver tissue lysate with GOT1 antibody. Predicted molecular weight ~41 kDa.



Flow cytometry testing of human HepG2 cells with GOT1 antibody at 1 ug/million cells (blocked with goat sera); Red=cells alone, Green=isotype control, Blue= GOT1 antibody.

Description

Aspartate aminotransferase, cytoplasmic is an enzyme that in humans is encoded by the GOT1 gene. Glutamic-oxaloacetic transaminase is a pyridoxal phosphate-dependent enzyme which exists in cytoplasmic and mitochondrial forms, GOT1 and GOT2, respectively. GOT plays a role in amino acid metabolism and the urea and tricarboxylic acid cycles. The two enzymes are homodimeric and show close homology.

Application Notes

Optimal dilution of the GOT1 antibody should be determined by the researcher.

Immunogen

E. coli-derived recombinant human protein (amino acids S5-Q413) was used as the immunogen for the GOT1 antibody.

Storage

After reconstitution, the GOT1 antibody can be stored for up to one month at 4oC. For long-term, aliquot and store at -20oC. Avoid repeated freezing and thawing.

