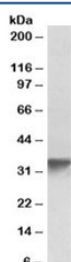


GOLPH3 Antibody (R33520)

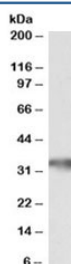
Catalog No.	Formulation	Size
R33520-100UG	0.5 mg/ml in 1X TBS, pH7.3, with 0.5% BSA (US sourced) and 0.02% sodium azide	100 ug

[Bulk quote request](#)

Availability	1-3 business days
Species Reactivity	Human, Mouse
Predicted Reactivity	Dog, Cow
Format	Antigen affinity purified
Clonality	Polyclonal (goat origin)
Isotype	Goat Ig
Purity	Antigen affinity
Gene ID	64083
Applications	Western Blot : 0.1-0.3ug/ml ELISA (peptide) LOD : 1:128000
Limitations	This GOLPH3 antibody is available for research use only.



Western blot testing of human platelet lysate with GOLPH3 antibody at 0.3ug/ml.
Predicted molecular weight ~34 kDa.



Western blot testing of mouse brain lysate with GOLPH3 antibody at 0.1ug/ml. Predicted molecular weight ~34 kDa.

Description

Additional name(s) for this target protein: Golgi phosphoprotein 3

Application Notes

Optimal dilution of the GOLPH3 antibody should be determined by the researcher.

Immunogen

Amino acids DLATKRVRQLLDLD were used as the immunogen for this GOLPH3 antibody.

Storage

Aliquot and store the GOLPH3 antibody at -20oC.