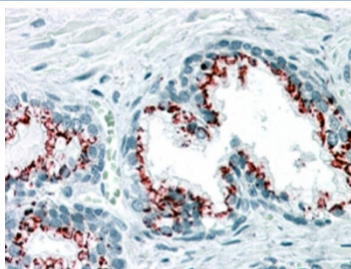


GOLPH2 Antibody / GOLM1 (R34858)

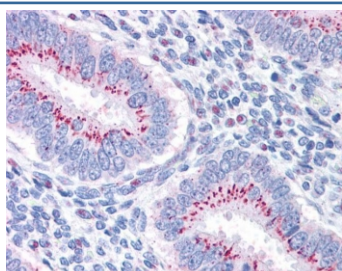
Catalog No.	Formulation	Size
R34858-100UG	0.5 mg/ml in 1X TBS, pH7.3, with 0.5% BSA (US sourced) and 0.02% sodium azide	100 ug

[Bulk quote request](#)

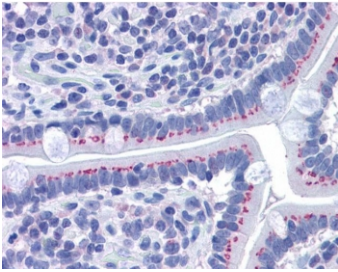
Availability	1-3 business days
Species Reactivity	Human
Format	Antigen affinity purified
Clonality	Polyclonal (goat origin)
Isotype	Goat Ig
Purity	Antigen affinity
Gene ID	51280
Localization	Cytoplasmic (Golgi apparatus)
Applications	Immunohistochemistry (FFPE) : 3-6ug/ml ELISA (peptide) LOD : 1:16000
Limitations	This GOLPH2 antibody is available for research use only.



IHC staining of FFPE human prostate with GOLPH2 antibody at 3.75ug/ml. HIER: steamed with pH6 citrate buffer, AP-staining.



IHC staining of FFPE human uterus with GOLPH2 antibody at 3.75ug/ml. HIER: steamed with pH6 citrate buffer, AP-staining.



IHC staining of FFPE human small intestine with GOLPH2 antibody at 3.75ug/ml. HIER: steamed with pH6 citrate buffer, AP-staining.

Description

Additional name(s) for this target protein: Golgi phosphoprotein 2; GOLM1; GP73; Golgi protein, 73-kD

Application Notes

Optimal dilution of the GOLPH2 antibody should be determined by the researcher.

Immunogen

Amino acids NLLDQREKRNHTL were used as the immunogen for this GOLPH2 antibody.

Storage

Aliquot and store the GOLPH2 antibody at -20oC.