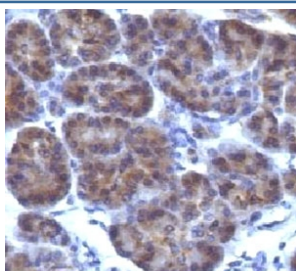


Golgi Antibody / Golgi apparatus protein 1 / GLG1 [clone CRFG1] (V7095)

Catalog No.	Formulation	Size
V7095-100UG	0.2 mg/ml in 1X PBS with 0.1 mg/ml BSA (US sourced) and 0.05% sodium azide	100 ug
V7095-20UG	0.2 mg/ml in 1X PBS with 0.1 mg/ml BSA (US sourced) and 0.05% sodium azide	20 ug
V7095SAF-100UG	1 mg/ml in 1X PBS; BSA free, sodium azide free	100 ug
V7095IHC-7ML	Prediluted in 1X PBS with 0.1 mg/ml BSA (US sourced) and 0.05% sodium azide; *For IHC use only*	7 ml

Bulk quote request

Availability	1-3 business days
Species Reactivity	Human
Format	Purified
Clonality	Monoclonal (mouse origin)
Isotype	Mouse IgG1, kappa
Clone Name	CRFG1
Purity	Protein G affinity chromatography
UniProt	Q92896
Localization	Golgi complex in cytoplasm
Applications	Immunohistochemistry (FFPE) : 1-2ug/ml for 30 min at RT Prediluted IHC Only Format : incubate for 30 min at RT (1)
Limitations	This Golgi antibody is available for research use only.



IHC testing of FFPE human pancreas and Golgi antibody (clone CRFG1). FFPE testing requires sections to be boiled in pH 9 10mM Tris with 1mM EDTA followed by cooling at RT for 20 min., prior to staining.

Description

Part of the cellular endomembrane system, the Golgi apparatus packages proteins into membrane-bound vesicles inside the cell before the vesicles are sent to their destination. The Golgi apparatus resides at the intersection of the secretory, lysosomal, and endocytic pathways. It is of particular importance in processing proteins for secretion, containing a set of glycosylation enzymes that attach various sugar monomers to proteins as the proteins move through the apparatus. [Wiki] This antibody is useful in staining the Golgi apparatus in cell or tissue preparations and subcellular fractions.

Application Notes

Titration of the Golgi antibody may be required for optimal performance.

1. The prediluted format is supplied in a dropper bottle and is optimized for use in IHC. After epitope retrieval step (if required), drip mAb solution onto the tissue section and incubate at RT for 30 min.

Immunogen

The Golgi fraction from human liver cells was used as the immunogen for the Golgi antibody. Not suitable for mouse and rat sample testing.

Storage

Store the Golgi antibody at 2-8°C (with azide) or aliquot and store at -20°C or colder (without azide).