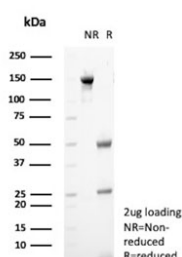


GnRH-Receptor Antibody / LHCG Receptor [clone A9E4] (V5532)

Catalog No.	Formulation	Size
V5532-100UG	0.2 mg/ml in 1X PBS with 0.1 mg/ml BSA (US sourced), 0.05% sodium azide	100 ug
V5532-20UG	0.2 mg/ml in 1X PBS with 0.1 mg/ml BSA (US sourced), 0.05% sodium azide	20 ug
V5532SAF-100UG	1 mg/ml in 1X PBS; BSA free, sodium azide free	100 ug

[Bulk quote request](#)

Availability	1-3 business days
Species Reactivity	Human
Format	Purified
Host	Mouse
Clonality	Monoclonal (mouse origin)
Isotype	Mouse IgG1, kappa
Clone Name	A9E4
Purity	Protein A/G affinity
UniProt	P30968
Localization	Cell membrane
Applications	ELISA :
Limitations	This GnRH-Receptor antibody is available for research use only.



SDS-PAGE analysis of purified, BSA-free GnRH-Receptor antibody (clone A9E4) as confirmation of integrity and purity.

Description

Recognizes an epitope on the extracellular domain of gonadotropin releasing hormone (GnRH) receptor or luteinizing hormone receptor (LHCGR). Lutropin (also designated luteinizing hormone) plays a role in spermatogenesis and

ovulation by stimulating the testes and ovaries to produce steroids. Gonadotropin (also designated choriogonadotropin) production in the placenta maintains estrogen and progesterone levels during the first trimester of pregnancy. Ovaries and testes abundantly express luteinizing hormone/choriogonadotropin receptor. GnRH receptor contains seven hydrophobic transmembrane domains connected by hydrophilic extracellular and intracellular loops characteristic of G-protein coupled receptors. GnRH stimulates the gonadotrophs of the anterior pituitary to secrete luteinizing hormone (LH) as well as follicle-stimulating hormone (FSH). GnRH influences the protective effect of pregnancy and Gonadotropin against breast cancer. The expression of GnRH on breast carcinoma correlates in part to the degree of tumor differentiation. GnRH-positive breast tumors occur more frequently in tumors with greater cell differentiation in premenopausal women. GnRH is present in luteal and granulosa cells as well as in ovarian cell membrane preparations.

Application Notes

Optimal dilution of the GnRH-Receptor antibody should be determined by the researcher.

Immunogen

amino acids MANSASPEQNQHCSAINNSIPLMQGNLPY from the N-terminal of human GnRH receptor was used as the immunogen for the GnRH-Receptor antibody.

Storage

Aliquot the GnRH-Receptor antibody and store frozen at -20oC or colder. Avoid repeated freeze-thaw cycles.