

GMCSF Antibody (R31436)

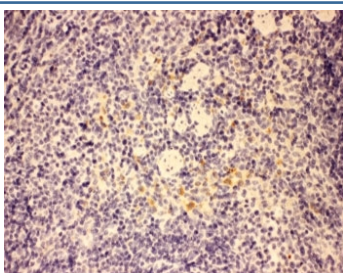
Catalog No.	Formulation	Size
R31436	0.5mg/ml if reconstituted with 0.2ml sterile DI water	100 ug

Bulk quote request

Availability	1-3 business days
Species Reactivity	Mouse
Format	Antigen affinity purified
Host	Rabbit
Clonality	Polyclonal (rabbit origin)
Isotype	Rabbit IgG
Purity	Antigen affinity
Buffer	Lyophilized from 1X PBS with 2% Trehalose and 0.005% sodium azide
UniProt	P01587
Applications	Western Blot : 0.5-1ug/ml IHC (FFPE) : 0.5-1ug/ml
Limitations	This GMCSF antibody is available for research use only.

kDa
200 -
116 -
97 -
66 -
44 -
31 -
22 -
14 -
6 -

Western blot testing of GMCSF antibody and recombinant mouse protein (0.5ng)



IHC-P: GMCSF antibody testing of mouse spleen tissue. HIER: steamed with pH6 citrate buffer.

Description

Granulocyte-macrophage colony-stimulating factor is a protein secreted by macrophages, T cells, mast cells, endothelial cells, and fibroblasts. It stimulates stem cells to produce granulocytes and monocytes and is an essential regulator of neutrophil function.

Application Notes

The stated application concentrations are suggested starting amounts. Titration of the GM-CSF antibody may be required due to differences in protocols and secondary/substrate sensitivity.

Immunogen

Mouse partial recombinant protein (AA 18-141) was used as the immunogen for this GMCSF antibody.

Storage

After reconstitution, the GMCSF antibody can be stored for up to one month at 4oC. For long-term, aliquot and store at -20oC. Avoid repeated freezing and thawing.