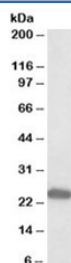


GM2A Antibody (R36302)

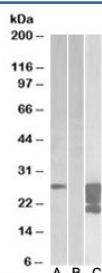
Catalog No.	Formulation	Size
R36302-100UG	0.5 mg/ml in 1X TBS, pH7.3, with 0.5% BSA (US sourced) and 0.02% sodium azide	100 ug

[Bulk quote request](#)

Availability	1-3 business days
Species Reactivity	Human, Rat
Predicted Reactivity	Mouse, Rabbit
Format	Antigen affinity purified
Host	Goat
Clonality	Polyclonal (goat origin)
Isotype	Goat Ig
Purity	Antigen affinity
Gene ID	2760
Applications	Western Blot : 1-3ug/ml ELISA (peptide) LOD : 1:4000
Limitations	This GM2A antibody is available for research use only.



Western blot of rat kidney lysate with GM2A antibody at 0.3ug/ml. Predicted molecular weight ~22kDa.



Western blot of HEK293 lysate overexpressing human GM2A-FLAG probed with GMA2 antibody (1ug/ml) in Lane A and anti-FLAG (1/30000) in lane C. Mock-transfected HEK293 probed with GMA2 antibody (1ug/ml) in Lane B. Predicted molecular weight ~22kDa.

Description

Additional name(s) for this target protein: GM2 ganglioside activator; sphingolipid activator protein 3 (SAP-3)

Application Notes

Optimal dilution of the GM2A antibody should be determined by the researcher.

1. This GM2A antibody is specific for isoform 1.

Immunogen

Amino acids TTGNYRIESVLS were used as the immunogen for this GM2A antibody.

Storage

Aliquot and store the GM2A antibody at -20oC.