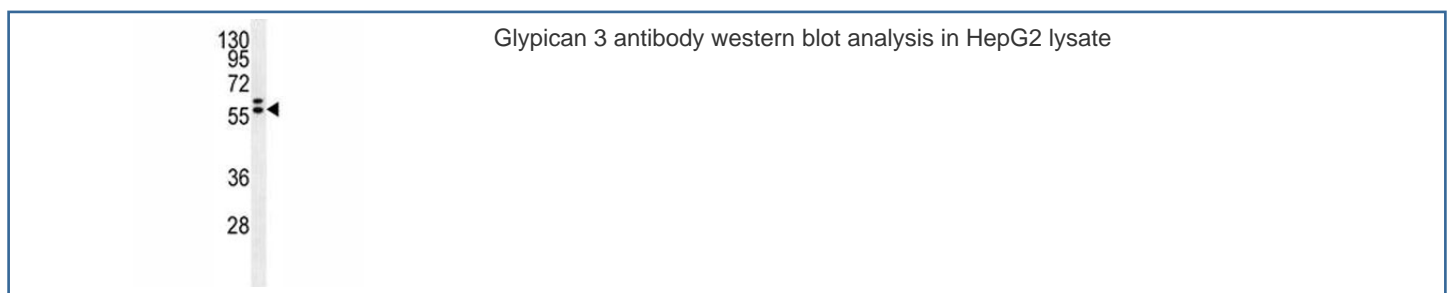
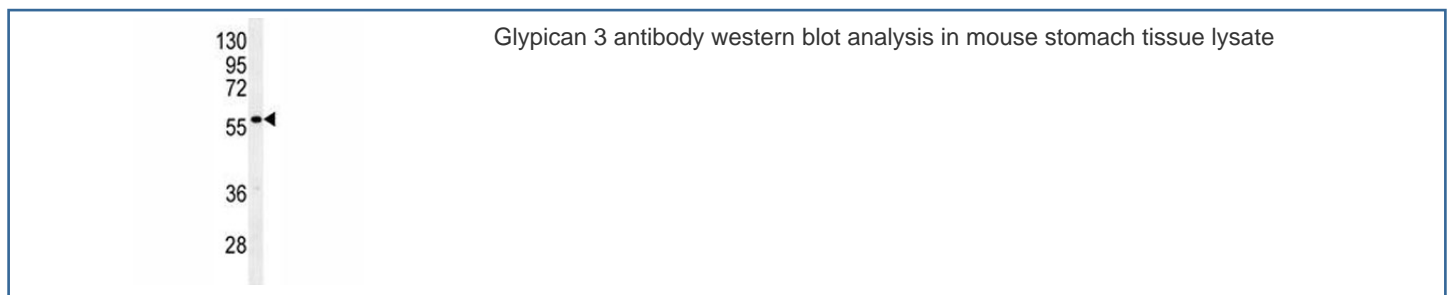


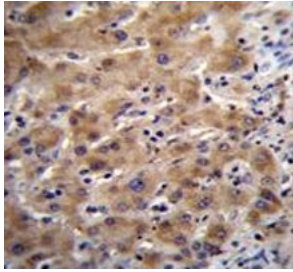
## Glypican 3 Antibody (F49599)

Catalog No.	Formulation	Size
F49599-0.4ML	In 1X PBS, pH 7.4, with 0.09% sodium azide	0.4 ml
F49599-0.08ML	In 1X PBS, pH 7.4, with 0.09% sodium azide	0.08 ml

[Bulk quote request](#)

<b>Availability</b>	1-3 business days
<b>Species Reactivity</b>	Human, Mouse
<b>Format</b>	Purified
<b>Host</b>	Rabbit
<b>Clonality</b>	Polyclonal (rabbit origin)
<b>Isotype</b>	Rabbit Ig
<b>Purity</b>	Purified
<b>UniProt</b>	P51654
<b>Applications</b>	Western Blot : 1:1000 IHC (Paraffin) : 1:50-1:100
<b>Limitations</b>	This Glypican 3 antibody is available for research use only.





Glypican 3 antibody immunohistochemistry analysis in formalin fixed and paraffin embedded human liver tissue.

## Description

GPC3 is a cell surface proteoglycan that bears heparan sulfate. This protein may be involved in the suppression/modulation of growth in the predominantly mesodermal tissues and organs, and may play a role in the modulation of IGF2 interactions with its receptor and thereby modulate its function. Members of the glypican-related integral membrane proteoglycan family contain a core protein anchored to the cytoplasmic membrane via a glycosyl phosphatidylinositol (GPI) linkage. These proteins may play a role in the control of cell division, growth regulation, and tumor predisposition. Deletion mutations in GPC3 are the cause of Simpson-Golabi-Behmel syndrome (SGBS), also known as Simpson dysmorphia syndrome (SDYS). SGBS is a condition characterized by pre- and postnatal overgrowth (gigantism) with visceral and skeletal anomalies.

## Application Notes

Titration of the Glypican 3 antibody may be required due to differences in protocols and secondary/substrate sensitivity.

## Immunogen

A portion of amino acids 21-50 from the human protein was used as the immunogen for this Glypican 3 antibody.

## Storage

Aliquot the Glypican 3 antibody and store frozen at -20oC or colder. Avoid repeated freeze-thaw cycles.