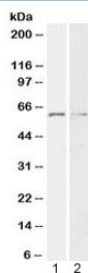


## Glypican-1 Antibody / GPC1 (R36436)

Catalog No.	Formulation	Size
R36436-100UG	0.5 mg/ml in 1X TBS, pH7.3, with 0.5% BSA (US sourced) and 0.02% sodium azide	100 ug

[Bulk quote request](#)

<b>Availability</b>	1-3 business days
<b>Species Reactivity</b>	Human
<b>Format</b>	Antigen affinity purified
<b>Host</b>	Goat
<b>Clonality</b>	Polyclonal (goat origin)
<b>Isotype</b>	Goat Ig
<b>Purity</b>	Antigen affinity
<b>Gene ID</b>	2817
<b>Applications</b>	Western Blot : 1-3ug/ml ELISA (peptide) LOD : 1:16000
<b>Limitations</b>	This Glypican-1 antibody is available for research use only.



Western blot testing of human 1) HeLa and 2) K562 cell lysate with Glypican-1 antibody at 2ug/ml. Predicted molecular weight: ~62 kDa.

### Description

Additional name(s) for this target protein: Glypican proteoglycan 1

### Application Notes

Optimal dilution of the Glypican-1 antibody should be determined by the researcher.

### Immunogen

Amino acids TDKFWGTSGVES were used as the immunogen for this Glypican-1 antibody.

## **Storage**

Aliquot and store the Glypican-1 antibody at -20oC.