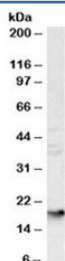


## Glycophorin A Antibody (R36097)

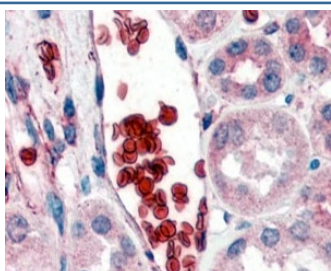
Catalog No.	Formulation	Size
R36097-100UG	0.5 mg/ml in 1X TBS, pH7.3, with 0.5% BSA (US sourced) and 0.02% sodium azide	100 ug

[Bulk quote request](#)

Availability	1-3 business days
Species Reactivity	Human
Format	Antigen affinity purified
Clonality	Polyclonal (goat origin)
Isotype	Goat Ig
Purity	Antigen affinity
Gene ID	2993
Localization	Cytoplasmic, membranous
Applications	Western Blot : 1-3ug/ml Immunohistochemistry (FFPE) : 2-4ug/ml ELISA (peptide) LOD : 1:4000
Limitations	This Glycophorin A antibody is available for research use only.



Western blot testing of human liver lysate with Glycophorin A antibody at 1ug/ml.  
Expected molecular weight: routinely observed at ~16kDa and/or ~38kDa.



IHC staining of erythrocytes in FFPE human kidney tissue with Glycophorin A antibody at 2ug/ml. HIER: steamed with pH6 citrate buffer, AP-staining.

## Description

Additional name(s) for this target protein: GYP A

## Application Notes

Optimal dilution of the Glycophorin A antibody should be determined by the researcher.

## Immunogen

Amino acids SVEIENPETS DQ were used as the immunogen for this Glycophorin A antibody.

## Storage

Aliquot and store the Glycophorin A antibody at -20oC.