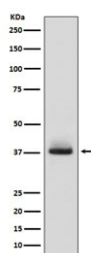


Glycophorin A Antibody [clone ADOG-7] (RQ5004)

Catalog No.	Formulation	Size
RQ5004	Antibody in PBS with 0.02% sodium azide, 50% glycerol and 0.4-0.5mg/ml BSA	100 ul

[Bulk quote request](#)

Availability	1-2 weeks
Species Reactivity	Human
Format	Purified
Clonality	Rabbit Monoclonal
Isotype	Rabbit IgG
Clone Name	ADOG-7
Purity	Affinity purified
UniProt	P02724
Applications	Western Blot : 1:500-1:1000
Limitations	This Glycophorin A antibody is available for research use only.



Western blot testing of human fetal liver lysate with Glycophorin A antibody. Expected molecular weight: ~19 kDa (glycosylated monomer), ~38 kDa (glycosylated dimer).

Description

Glycophorin A is the major intrinsic membrane protein of the erythrocyte. The N-terminal glycosylated segment, which lies outside the erythrocyte membrane, has MN blood group receptors. Appears to be important for the function of SLC4A1 and is required for high activity of SLC4A1. [UniProt]

Application Notes

Optimal dilution of the Glycophorin A antibody should be determined by the researcher.

Immunogen

A synthetic peptide specific to human Glycophorin A / GYPA / CD235a was used as the immunogen for the Glycophorin A antibody.

Storage

Store the Glycophorin A antibody at -20oC.