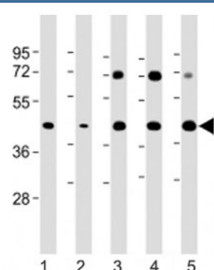


Glycogenin Antibody / GYG1 (C-Terminal Region) (F54103)

Catalog No.	Formulation	Size
F54103-0.2ML	In 1X PBS, pH 7.4, with 0.09% sodium azide	0.2 ml
F54103-0.05ML	In 1X PBS, pH 7.4, with 0.09% sodium azide	0.05 ml

[Bulk quote request](#)

Availability	1-3 business days
Species Reactivity	Human, Mouse, Rat
Format	Antigen affinity purified
Clonality	Polyclonal (rabbit origin)
Isotype	Rabbit Ig
Purity	Antigen affinity
UniProt	P46976
Applications	Western Blot : 1:2000
Limitations	This Glycogenin antibody is available for research use only.



Western blot testing of Glycogenin antibody at 1:2000: Lane 1) human HeLa, 2) human HepG2, 3) mouse heart, 4) mouse skeletal muscle and 5) rat heart lysate. Predicted molecular weight ~39 kDa.

Description

Glycogenin self-glucosylates, via an inter-subunit mechanism, to form an oligosaccharide primer that serves as substrate for glycogen synthase. [UniProt]

Application Notes

The stated application concentrations are suggested starting points. Titration of the Glycogenin antibody may be required due to differences in protocols and secondary/substrate sensitivity.

Immunogen

A portion of amino acids 314-347 from human Glycogenin was used as the immunogen for the Glycogenin antibody.

Storage

Aliquot the Glycogenin antibody and store frozen at -20oC or colder. Avoid repeated freeze-thaw cycles.