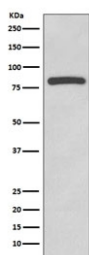


## Glycogen synthase Antibody / GYS1 [clone GEF-7] (RQ5415)

Catalog No.	Formulation	Size
RQ5415	Antibody in PBS with 0.02% sodium azide, 50% glycerol and 0.4-0.5mg/ml BSA	100 ul

[Bulk quote request](#)

Availability	1-2 weeks
Species Reactivity	Human
Format	Purified
Clonality	Rabbit Monoclonal
Isotype	Rabbit IgG
Clone Name	GEF-7
Purity	Affinity purified
UniProt	P13807
Applications	Western Blot : 1:5000-1:20000
Limitations	This Glycogen synthase antibody is available for research use only.



Western blot testing of human HeLa cell lysate with Glycogen synthase antibody.  
Predicted molecular weight ~84 kDa.

### Description

The protein encoded by the GYS1 gene catalyzes the addition of glucose monomers to the growing glycogen molecule through the formation of alpha-1,4-glycoside linkages. Mutations in this gene are associated with muscle glycogen storage disease. Alternatively spliced transcript variants encoding different isoforms have been found for this gene. [RefSeq]

### Application Notes

Optimal dilution of the Glycogen synthase antibody should be determined by the researcher.

## Immunogen

A synthetic peptide specific to human Glycogen synthase / GYS1 was used as the immunogen for the Glycogen synthase antibody.

## Storage

Store the Glycogen synthase antibody at -20oC.