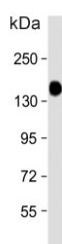


## Glycogen debranching enzyme Antibody / AGL (F54768)

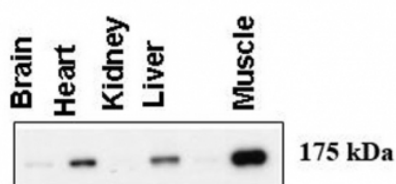
Catalog No.	Formulation	Size
F54768-0.4ML	In 1X PBS, pH 7.4, with 0.09% sodium azide	0.4 ml
F54768-0.08ML	In 1X PBS, pH 7.4, with 0.09% sodium azide	0.08 ml

[Bulk quote request](#)

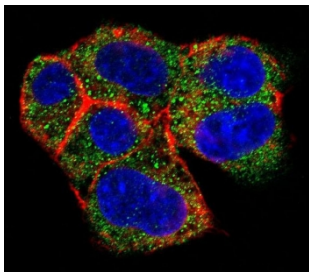
<b>Availability</b>	1-3 business days
<b>Species Reactivity</b>	Human
<b>Format</b>	Purified
<b>Clonality</b>	Polyclonal (rabbit origin)
<b>Isotype</b>	Rabbit Ig
<b>Purity</b>	Purified
<b>UniProt</b>	P35573
<b>Applications</b>	Western Blot : 1:2000-1:8000 Immunofluorescence : 1:10-1:50
<b>Limitations</b>	This Glycogen debranching enzyme antibody is available for research use only.



Western blot testing of human skeletal muscle tissue lysate with Glycogen debranching enzyme antibody. Predicted molecular weight ~175 kDa.



Western blot testing of human tissue lysate with Glycogen debranching enzyme antibody. Predicted molecular weight ~175 kDa. Data courtesy of Dr. Alan Cheng, Department of Internal Medicine, Life Sciences Institute, University of Michigan.



Immunofluorescent staining of human HepG2 cells with Glycogen debranching enzyme antibody (green), DAPI nuclear stain (blue) and anti-Actin (red).

## Description

AGL is a glycogen debrancher enzyme which is involved in glycogen degradation. This enzyme has two independent catalytic activities which occur at different sites on the protein: a 4-alpha-glucotransferase activity and a amylo-1,6-glucosidase activity. Mutations in the AGL gene are associated with glycogen storage disease although a wide range of enzymatic and clinical variability occurs which may be due to tissue-specific alternative splicing.

## Application Notes

The stated application concentrations are suggested starting points. Titration of the Glycogen debranching enzyme antibody may be required due to differences in protocols and secondary/substrate sensitivity.

## Immunogen

A portion of amino acids 1479-1510 from the human protein was used as the immunogen for the Glycogen debranching enzyme antibody.

## Storage

Aliquot the Glycogen debranching enzyme antibody and store frozen at -20oC or colder. Avoid repeated freeze-thaw cycles.