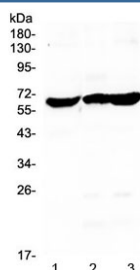


## Glycerol kinase Antibody / GK (RQ4117)

Catalog No.	Formulation	Size
RQ4117	0.5mg/ml if reconstituted with 0.2ml sterile DI water	100 ug

**Bulk quote request**

<b>Availability</b>	1-3 business days
<b>Species Reactivity</b>	Human
<b>Format</b>	Antigen affinity purified
<b>Clonality</b>	Polyclonal (rabbit origin)
<b>Isotype</b>	Rabbit IgG
<b>Purity</b>	Antigen affinity purified
<b>Buffer</b>	Lyophilized from 1X PBS with 2% Trehalose and 0.025% sodium azide
<b>UniProt</b>	P32189
<b>Applications</b>	Western Blot : 0.5-1ug/ml Direct ELISA : 0.1-0.5ug/ml
<b>Limitations</b>	This Glycerol kinase antibody is available for research use only.



Western blot testing of human 1) SW579, 2) SKOV3 and 3) U-87 MG cell lysate with Glycerol kinase antibody at 0.5ug/ml. Predicted molecular weight ~61 kDa.

## Description

Glycerol kinase is a phosphotransferase enzyme involved in triglycerides and glycerophospholipids synthesis. The protein encoded by this gene belongs to the FGGY kinase family. This protein is a key enzyme in the regulation of glycerol uptake and metabolism. It catalyzes the phosphorylation of glycerol by ATP, yielding ADP and glycerol-3-phosphate. Mutations in this gene are associated with glycerol kinase deficiency (GKD). Alternatively spliced transcript variants encoding different isoforms have been found for this gene.

## Application Notes

Optimal dilution of the Glycerol kinase antibody should be determined by the researcher.

## **Immunogen**

A recombinant human partial protein corresponding to amino acids M1-S180 was used as the immunogen for the Glycerol kinase antibody.

## **Storage**

After reconstitution, the Glycerol kinase antibody can be stored for up to one month at 4°C. For long-term, aliquot and store at -20°C. Avoid repeated freezing and thawing.