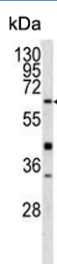


## Glutathione hydrolase 5 proenzyme Antibody / GGT5 / GGTLA1 (F54925)

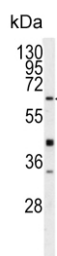
Catalog No.	Formulation	Size
F54925-0.4ML	In 1X PBS, pH 7.4, with 0.09% sodium azide	0.4 ml
F54925-0.08ML	In 1X PBS, pH 7.4, with 0.09% sodium azide	0.08 ml

[Bulk quote request](#)

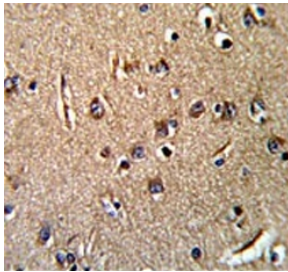
<b>Availability</b>	1-3 business days
<b>Species Reactivity</b>	Human, Mouse
<b>Format</b>	Purified
<b>Clonality</b>	Polyclonal (rabbit origin)
<b>Isotype</b>	Rabbit Ig
<b>Purity</b>	Purified
<b>UniProt</b>	P36269
<b>Applications</b>	Flow Cytometry : 1:10-1:50 (1x10 <sup>6</sup> cells) Immunohistochemistry (FFPE) : 1:50-1:100 Western Blot : 1:500-1:1000
<b>Limitations</b>	This Glutathione hydrolase 5 proenzyme antibody is available for research use only.



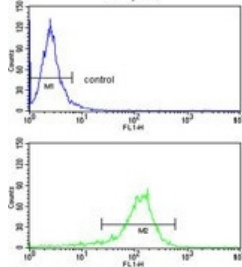
Western blot testing of mouse heart tissue lysate with Glutathione hydrolase 5 proenzyme antibody. Predicted molecular weight ~62 kDa.



Western blot testing of human Y79 cell lysate with Glutathione hydrolase 5 proenzyme antibody. Predicted molecular weight ~62 kDa.



IHC testing of FFPE human brain tissue with Glutathione hydrolase 5 proenzyme antibody. HIER: steam section in pH6 citrate buffer for 20 min and allow to cool prior to staining.



Flow cytometry testing of human HepG2 cells with Glutathione hydrolase 5 proenzyme antibody; Blue=isotype control, Green= Glutathione hydrolase 5 proenzyme antibody.

## Description

This gene is a member of gamma-glutamyl transpeptidase enzymes. This enzyme consists of a heavy and a light chain, and is able to hydrolyze the gamma-glutamyl moiety of glutathione. It converts leukotriene C4 to leukotriene D4, however, it doesn't convert synthetic substrates that are commonly used to assay gamma-glutamyl transpeptidase.

## Application Notes

The stated application concentrations are suggested starting points. Titration of the Glutathione hydrolase 5 proenzyme antibody may be required due to differences in protocols and secondary/substrate sensitivity.

## Immunogen

A portion of amino acids 130-156 from the human protein was used as the immunogen for the Glutathione hydrolase 5 proenzyme antibody.

## Storage

Aliquot the GGTLA1 antibody and store frozen at -20oC or colder. Avoid repeated freeze-thaw cycles.