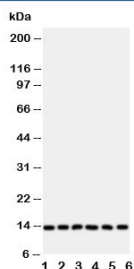


## Glutaredoxin 2 Antibody (R30985)

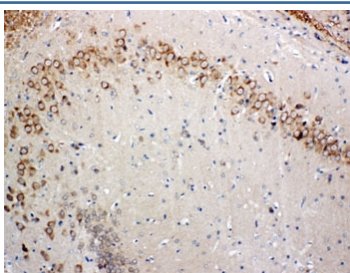
Catalog No.	Formulation	Size
R30985	0.5mg/ml if reconstituted with 0.2ml sterile DI water	100 ug

[Bulk quote request](#)

<b>Availability</b>	1-3 business days
<b>Species Reactivity</b>	Human, Mouse, Rat
<b>Format</b>	Antigen affinity purified
<b>Host</b>	Rabbit
<b>Clonality</b>	Polyclonal (rabbit origin)
<b>Isotype</b>	Rabbit IgG
<b>Purity</b>	Antigen affinity
<b>Buffer</b>	Lyophilized from 1X PBS with 2.5% BSA and 0.025% sodium azide/thimerosal
<b>UniProt</b>	Q9NS18
<b>Applications</b>	Western Blot : 0.5-1ug/ml IHC (FFPE) : 0.5-1ug/ml
<b>Limitations</b>	This Glutaredoxin 2 antibody is available for research use only.



Western blot testing of Glutaredoxin 2 antibody and Lane 1: rat testis; and human samples 2: HeLa; 3: U87; 4: NEU; 5: Jurkat; 6: MCF-7 cell lysate



IHC-P: Glutaredoxin 2 antibody testing of rat brain tissue

## Description

Glutaredoxin-2 also known as GLRX2 and GRX2, is a protein that in humans is encoded by the GLRX2 gene. Glutaredoxins are a family of glutathione-dependent hydrogen donors that participate in a variety of cellular redox reactions. By sequence analysis, Lundberg et al.(2001) and Gladyshev et al.(2001) identified the GLRX2 gene within a clone mapping to chromosome 1q31.2-q31.3. Lundberg et al.(2001) determined that the gene contains 5 exons spanning about 9.6 kb. The GLRX2B transcript uses a first exon(exon 1B) located upstream from the first exon used by the GLRX2A transcript(exon 1A), suggesting that alternative splicing generates the isoforms. Lundberg et al.(2001)assayed reductase activity in recombinant proteins of both GLRX2 isoforms. They found that both have GSH-dependent dehydroascorbate reductase activity and 2-hydroxyethyl disulfide reductase activity.

## Application Notes

The stated application concentrations are suggested starting amounts. Titration of the Glutaredoxin 2 antibody may be required due to differences in protocols and secondary/substrate sensitivity.

## Immunogen

An amino acid sequence from the middle region of human GLRX2 (EYGNQFQDALKMTGER) was used as the immunogen for this Glutaredoxin 2 antibody.

## Storage

After reconstitution, the Glutaredoxin 2 antibody can be stored for up to one month at 4oC. For long-term, aliquot and store at -20oC. Avoid repeated freezing and thawing.