

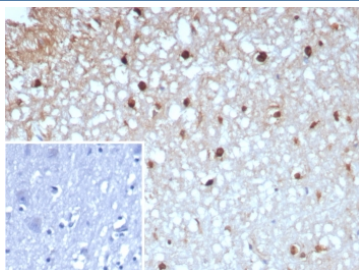
Glutamine Synthetase Antibody / GLUL [clone GLUL/8996R] (V4746)

| Catalog No. | Formulation | Size |
|----------------|---|--------|
| V4746-100UG | 0.2 mg/ml in 1X PBS with 0.1 mg/ml BSA (US sourced), 0.05% sodium azide | 100 ug |
| V4746-20UG | 0.2 mg/ml in 1X PBS with 0.1 mg/ml BSA (US sourced), 0.05% sodium azide | 20 ug |
| V4746SAF-100UG | 1 mg/ml in 1X PBS; BSA free, sodium azide free | 100 ug |

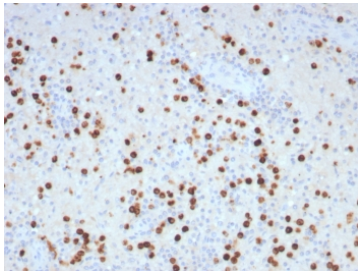
Recombinant **RABBIT MONOCLONAL**

[Bulk quote request](#)

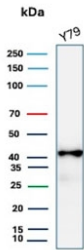
| | |
|---------------------------|--|
| Availability | 1-3 business days |
| Species Reactivity | Human |
| Format | Purified |
| Host | Rabbit |
| Clonality | Recombinant Rabbit Monoclonal |
| Isotype | Rabbit IgG, kappa |
| Clone Name | GLUL/8996R |
| Purity | Protein A/G affinity |
| UniProt | P15104 |
| Localization | Cytoplasm |
| Applications | Immunohistochemistry (FFPE) : 1-2ug/ml for 30 min at RT Western Blot : 2-4ug/ml |
| Limitations | This Glutamine Synthetase antibody is available for research use only. |



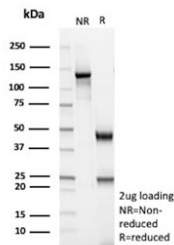
IHC staining of FFPE human brain tissue with GLUL antibody (clone GLUL/8996R). Inset: PBS used in place of primary Ab (secondary Ab negative control). HIER: boil tissue sections in pH 9 10mM Tris with 1mM EDTA for 20 min and allow to cool before testing.



IHC staining of FFPE human brain tissue with GLUL antibody (clone GLUL/8996R).
HIER: boil tissue sections in pH 9 10mM Tris with 1mM EDTA for 20 min and allow to cool before testing.



Western blot testing of human Y79 cell lysate with Glutamine Synthetase antibody.
Predicted molecular weight ~42 kDa.



SDS-PAGE analysis of purified, BSA-free Glutamine Synthetase antibody (clone GLUL/8996R) as confirmation of integrity and purity.

Description

Glutamine synthetase (Gl Syn) forms a homo-octamer that serves as a catalyst for the amination of glutamic acid to form glutamine. This enzyme is a marker for astrocytes, which serve as the primary site of conversion of glutamic acid to glutamine in the brain. Induction of glutamine synthetase is seen upon astrocyte cell contact with neurons. Elevated expression of glutamine synthetase in glial cells has been shown to protect neurons from degeneration due to excess glutamate. Glutamine synthetase is also present in the liver and is involved in nitrogen homeostasis. Overexpression of glutamine synthetase has been shown in primary liver cancers, indicating a potential role for glutamine synthetase in hepatocyte transformation.

Application Notes

Optimal dilution of the Glutamine Synthetase antibody should be determined by the researcher.

Immunogen

A recombinant partial protein sequence (within amino acids 200-373) from the human protein was used as the immunogen for the Glutamine Synthetase antibody.

Storage

Aliquot the Glutamine Synthetase antibody and store frozen at -20°C or colder. Avoid repeated freeze-thaw cycles.

