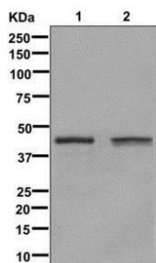


Glutamine Synthetase Antibody [clone CCH-7] (RQ5441)

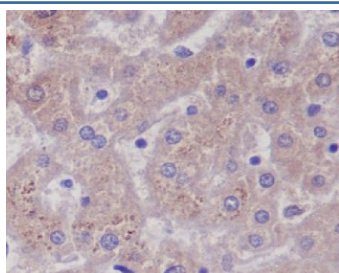
Catalog No.	Formulation	Size
RQ5441	Antibody in PBS with 0.02% sodium azide, 50% glycerol and 0.4-0.5mg/ml BSA	100 ul

[Bulk quote request](#)

Availability	1-2 weeks
Species Reactivity	Human
Format	Purified
Clonality	Rabbit Monoclonal
Isotype	Rabbit IgG
Clone Name	CCH-7
Purity	Affinity purified
UniProt	P15104
Localization	Cytoplasmic
Applications	Western Blot : 1:500-1:2000 Immunohistochemistry (FFPE) : 1:50-1:200
Limitations	This Glutamine Synthetase antibody is available for research use only.



Western blot testing of human 1) Jurkat and 2) HeLa cell lysate with Glutamine Synthetase antibody. Predicted molecular weight ~42 kDa.



IHC staining of FFPE human liver with Glutamine Synthetase antibody. HIER: boil tissue sections in pH6, 10mM citrate buffer, for 10-20 min and allow to cool before testing.

Description

The protein encoded by the GLUL gene belongs to the glutamine synthetase family. It catalyzes the synthesis of glutamine from glutamate and ammonia in an ATP-dependent reaction. This protein plays a role in ammonia and glutamate detoxification, acid-base homeostasis, cell signaling, and cell proliferation. Glutamine is an abundant amino acid, and is important to the biosynthesis of several amino acids, pyrimidines, and purines. Mutations in this gene are associated with congenital glutamine deficiency, and overexpression of this gene was observed in some primary liver cancer samples. [RefSeq]

Application Notes

Optimal dilution of the Glutamine Synthetase antibody should be determined by the researcher.

Immunogen

A synthetic peptide specific to human Glutamine Synthetase / GLUL was used as the immunogen for the Glutamine Synthetase antibody.

Storage

Store the Glutamine Synthetase antibody at -20°C.