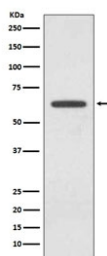


## Glutaminase Antibody / GLS [clone FIA-7] (RQ4800)

Catalog No.	Formulation	Size
RQ4800	Antibody in PBS with 0.02% sodium azide, 50% glycerol and 0.4-0.5mg/ml BSA	100 ul

[Bulk quote request](#)

Availability	1-2 weeks
Species Reactivity	Human
Format	Purified
Host	Rabbit
Clonality	Rabbit Monoclonal
Isotype	Rabbit IgG
Clone Name	FIA-7
Purity	Affinity purified
UniProt	O94925
Applications	Western Blot : 1:1000-1:2000
Limitations	This Glutaminase antibody is available for research use only.



Western blot testing of human 293T cell lysate with Glutaminase antibody. Predicted molecular weight: 65-73 kDa.

## Description

GLS encodes the K-type mitochondrial glutaminase. The encoded protein is an phosphate-activated amidohydrolase that catalyzes the hydrolysis of glutamine to glutamate and ammonia. This protein is primarily expressed in the brain and kidney plays an essential role in generating energy for metabolism, synthesizing the brain neurotransmitter glutamate and maintaining acid-base balance in the kidney. [RefSeq]

## Application Notes

Optimal dilution of the Glutaminase antibody should be determined by the researcher.

## Immunogen

A synthetic peptide specific to human Glutaminase / GLS was used as the immunogen for the Glutaminase antibody.

## Storage

Store the Glutaminase antibody at -20oC.