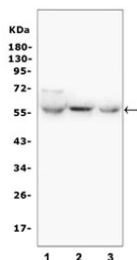


GLUT6 Antibody / SLC2A6 (RQ5149)

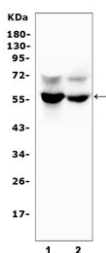
Catalog No.	Formulation	Size
RQ5149	0.5mg/ml if reconstituted with 0.2ml sterile DI water	100 ug

[Bulk quote request](#)

Availability	1-3 business days
Species Reactivity	Human, Rat
Format	Antigen affinity purified
Host	Rabbit
Clonality	Polyclonal (rabbit origin)
Isotype	Rabbit IgG
Purity	Affinity purified
Buffer	Lyophilized from 1X PBS with 2% Trehalose and 0.025% sodium azide
UniProt	Q9UGQ3
Applications	Western Blot : 0.5-1ug/ml Direct ELISA : 0.1-0.5ug/ml
Limitations	This GLUT6 antibody is available for research use only.



Western blot testing of rat 1) liver, 2) kidney and 3) lung tissue lysate with GLUT6 antibody. Predicted molecular weight ~55 kDa.



Western blot testing of human 1) placenta and 2) PC-3 lysate with GLUT6 antibody. Predicted molecular weight ~55 kDa.

Description

Solute carrier family 2, facilitated glucose transporter member 6 is a protein that in humans is encoded by the SLC2A6 gene. It is mapped to 9q34.2. Hexose transport into mammalian cells is catalyzed by a family of membrane proteins, including SLC2A6, that contain 12 transmembrane domains and a number of critical conserved residues.

Application Notes

Optimal dilution of the GLUT6 antibody should be determined by the researcher.

Immunogen

Amino acids M1-R507 from the human protein were used as the immunogen for the GLUT6 antibody.

Storage

Store the GLUT6 antibody at -20oC.