

GLUT5 Antibody (Glucose Transporter 5) (R31175)

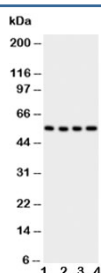
Catalog No.	Formulation	Size
R31175	0.5mg/ml if reconstituted with 0.2ml sterile DI water	100 ug



Citations (1)

[Bulk quote request](#)

Availability	1-3 business days
Species Reactivity	Human
Format	Antigen affinity purified
Clonality	Polyclonal (rabbit origin)
Isotype	Rabbit IgG
Purity	Antigen affinity
Buffer	Lyophilized from 1X PBS with 2.5% BSA and 0.025% sodium azide/thimerosal
UniProt	P22732
Localization	Cytoplasmic, membranous
Applications	Western Blot : 0.5-1ug/ml
Limitations	This GLUT5 antibody is available for research use only.



Western blot testing of Glut5 antibody; Lane 1: U87; 2: 293T; 3: HT1080; 4: SW620 cell lysate. Expected/observed molecular weight ~55 kDa.

Description

SLC2A5, also known as Glucose transporter 5, is a fructose transporter expressed on the apical border of enterocytes in the small intestine. The gene is located on chromosome 1. The protein allows for fructose to be transported from the intestinal lumen into the enterocyte by facilitated diffusion due to fructose's high concentration in the intestinal lumen. GLUT5 is also expressed in skeletal muscle, testis, kidney, fat tissue, and brain. Along with GLUT7, -9 and -11, GLUT5 is a class II glucose transporter family member. Fructose malabsorption or Dietary Fructose Intolerance is a dietary disability of the small intestine, where the amount of fructose carrier in enterocytes is deficient.

Application Notes

The stated application concentrations are suggested starting points. Titration of the GLUT5 antibody may be required due to differences in protocols and secondary/substrate sensitivity.

Immunogen

Amino acids 481-501 (VSEVYPEKEELKELPPVTSEQ-human) were used as the immunogen for this GLUT5 antibody.

Storage

After reconstitution, the GLUT5 antibody can be stored for up to one month at 4°C. For long-term, aliquot and store at -20°C. Avoid repeated freezing and thawing.