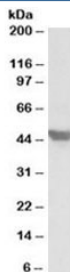


## GLUT4 Antibody (R36161)

Catalog No.	Formulation	Size
R36161-100UG	0.5 mg/ml in 1X TBS, pH7.3, with 0.5% BSA (US sourced) and 0.02% sodium azide	100 ug

[Bulk quote request](#)

<b>Availability</b>	1-3 business days
<b>Species Reactivity</b>	Human, Mouse, Rat
<b>Predicted Reactivity</b>	Cow, Pig
<b>Format</b>	Antigen affinity purified
<b>Host</b>	Goat
<b>Clonality</b>	Polyclonal (goat origin)
<b>Isotype</b>	Goat Ig
<b>Purity</b>	Antigen affinity
<b>Gene ID</b>	6517
<b>Applications</b>	Western Blot : 1-3ug/ml ELISA (peptide) LOD : 1:16000
<b>Limitations</b>	This GLUT4 antibody is available for research use only.



Western blot testing of mouse heart lysate with GLUT4 antibody at 1ug/ml. Predicted molecular weight: 45-55kDa.

### Description

Additional name(s) for this target protein: Glucose transporter 4; solute carrier family 2 (facilitated glucose transporter), member 4; SLC2A4

### Application Notes

Optimal dilution of the GLUT4 antibody should be determined by the researcher.

## **Immunogen**

Amino acids TELEYLGPDEND were used as the immunogen for this GLUT4 antibody.

## **Storage**

Aliquot and store the GLUT4 antibody at -20oC.