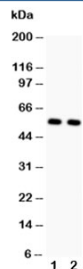


GLUT4 Antibody (Glucose Transporter 4) (R31534)

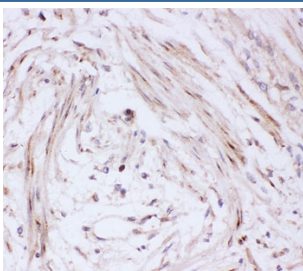
Catalog No.	Formulation	Size
R31534	0.5mg/ml if reconstituted with 0.2ml sterile DI water	100 ug

[Bulk quote request](#)

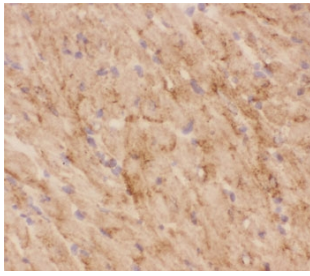
Availability	1-3 business days
Species Reactivity	Human, Mouse, Rat
Format	Antigen affinity purified
Host	Rabbit
Clonality	Polyclonal (rabbit origin)
Isotype	Rabbit IgG
Purity	Antigen affinity
Buffer	Lyophilized from 1X PBS with 2.5% BSA and 0.025% sodium azide
Gene ID	6517
Applications	Western Blot : 0.5-1ug/ml IHC (FFPE) : 0.5-1ug/ml IHC (Frozen) : 0.5-1ug/ml
Limitations	This GLUT4 antibody is available for research use only.



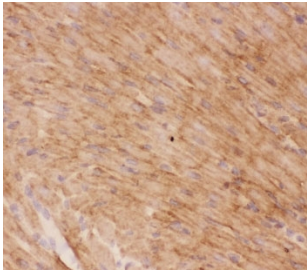
Western blot testing of GLUT4 antibody and Lane 1: rat heart; 2: rat skeletal muscle. Predicted molecular weight: 45-55kDa.



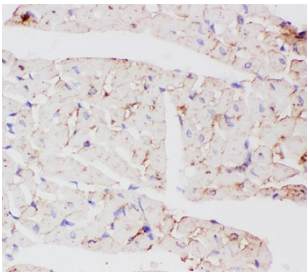
IHC-P: GLUT4 antibody testing of human intestinal cancer tissue



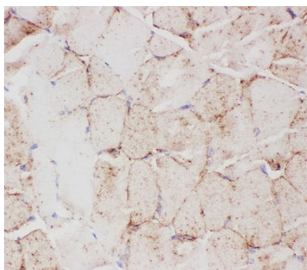
IHC-F testing of GLUT4 antibody and mouse heart tissue



IHC-F testing of GLUT4 antibody and rat heart tissue



IHC-P testing of rat heart tissue



IHC-P testing of mouse skeletal muscle tissue

Description

Glucose transporter 4, also known as SLC2A4 or Solute carrier family 2 (facilitated glucose transporter) member 4, is a protein that in humans is encoded by the GLUT4 gene. It is mapped to 17p13.1. This gene is a member of the solute carrier family 2 (facilitated glucose transporter) family and encodes a protein that functions as an insulin-regulated facilitative glucose transporter. In the absence of insulin, this integral membrane protein is sequestered within the cells of muscle and adipose tissue. Within minutes of insulin stimulation, the protein moves to the cell surface and begins to transport glucose across the cell membrane. Mutations in this gene have been associated with noninsulin-dependent diabetes mellitus (NIDDM).

Application Notes

The stated application concentrations are suggested starting points. Titration of the GLUT4 antibody may be required due to differences in protocols and secondary/substrate sensitivity.

Immunogen

Human partial recombinant protein (AA 333-509) was used as the immunogen for this GLUT4 antibody.

Storage

After reconstitution, the GLUT4 antibody can be stored for up to one month at 4°C. For long-term, aliquot and store at -20°C. Avoid repeated freezing and thawing.