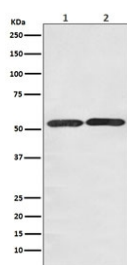


GLUT3 Antibody / SLC2A3 [clone ABHB-19] (RQ5354)

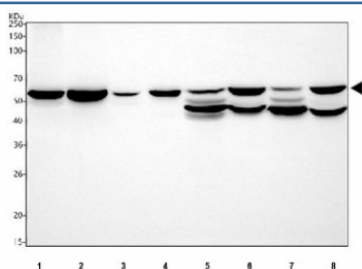
Catalog No.	Formulation	Size
RQ5354	Antibody in PBS with 0.02% sodium azide, 50% glycerol and 0.4-0.5mg/ml BSA	100 ul

[Bulk quote request](#)

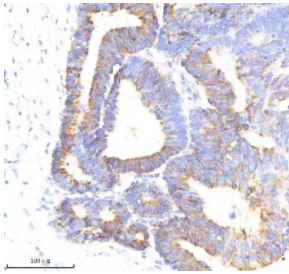
Availability	1-2 weeks
Species Reactivity	Human, Mouse, Rat
Format	Purified
Clonality	Rabbit Monoclonal
Isotype	Rabbit IgG
Clone Name	ABHB-19
Purity	Affinity purified
UniProt	P11169
Applications	Western Blot : 1:500-1:2000 Immunohistochemistry (FFPE) : 1:50-1:200
Limitations	This GLUT3 antibody is available for research use only.



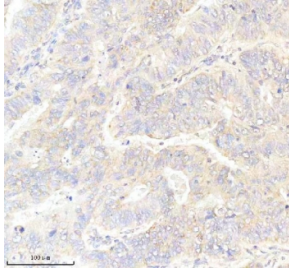
Western blot testing of 1) human HepG2 and 2) mouse NIH3T3 cell lysate with GLUT3 antibody. Predicted molecular weight ~54 kDa.



Western blot testing of 1) human HepG2, 2) human 293T, 3) human A431, 4) human SH-SY5Y, 5) rat kidney, 6) rat brain, 7) mouse kidney and 8) mouse brain tissue lysate with GLUT3 antibody. Predicted molecular weight ~54 kDa.



IHC staining of FFPE human colon cancer tissue with GLUT3 antibody. HIER: boil tissue sections in pH8 EDTA for 20 min and allow to cool before testing.



IHC staining of FFPE human stomach cancer tissue with GLUT3 antibody. HIER: boil tissue sections in pH8 EDTA for 20 min and allow to cool before testing.

Description

Glucose transporter 3 (or GLUT3), also known as solute carrier family 2, facilitated glucose transporter member 3 (SLC2A3) is a protein that in humans is encoded by the SLC2A3 gene. GLUT3 facilitates the transport of glucose across the plasma membranes of mammalian cells. GLUT3 is most known for its specific expression in neurons and has originally been designated as the neuronal GLUT. GLUT3 has been studied in other cell types with specific glucose requirements, including sperm, preimplantation embryos, circulating white blood cells and carcinoma cell lines. [Wiki]

Application Notes

Optimal dilution of the GLUT3 antibody should be determined by the researcher.

Immunogen

A synthetic peptide specific to human GLUT3 / SLC2A3 was used as the immunogen for the GLUT3 antibody.

Storage

Store the GLUT3 antibody at -20oC.