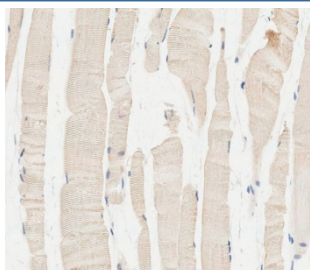


Glucosylceramidase beta Antibody / GBA / GC (F54518)

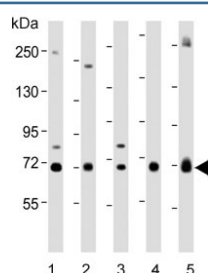
Catalog No.	Formulation	Size
F54518-0.2ML	In 1X PBS, pH 7.4, with 0.09% sodium azide	0.2 ml
F54518-0.05ML	In 1X PBS, pH 7.4, with 0.09% sodium azide	0.05 ml

[Bulk quote request](#)

Availability	1-3 business days
Species Reactivity	Human, Mouse
Format	Purified
Clonality	Polyclonal (rabbit origin)
Isotype	Rabbit IgG
Purity	Antigen affinity purified
UniProt	P04062
Localization	Cytoplasmic
Applications	Western Blot : 1:500-1:2000 Flow Cytometry : 1:25 (1x10e6 cells) Immunohistochemistry (FFPE) : 1:25
Limitations	This Glucosylceramidase beta antibody is available for research use only.



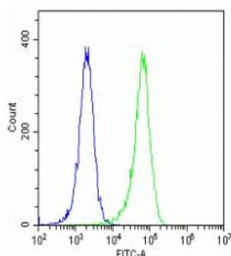
IHC testing of FFPE human skeletal muscle tissue with Glucosylceramidase beta antibody. HIER: steam section in pH6 citrate buffer for 20 min and allow to cool prior to staining.



Western blot testing of human 1) 293T, 2) HeLa, 3) LNCaP, 4) MCF7 and 5) U-2 OS cell lysate with Glucosylceramidase beta antibody. Predicted molecular weight ~60 kDa.

kDa
95
72
55
43
34
26

Western blot testing of mouse lung lysate with Glucosylceramidase beta antibody.
Predicted molecular weight ~60 kDa.



Flow cytometry testing of fixed and permeabilized human HeLa cells with Glucosylceramidase beta antibody; Blue=isotype control, Green= Glucosylceramidase beta antibody.

Description

GC is a protein that cleaves the beta-glucosidic linkage of glycosylceramide, an intermediate in glycolipid metabolism.

Application Notes

The stated application concentrations are suggested starting points. Titration of the Glucosylceramidase beta antibody may be required due to differences in protocols and secondary/substrate sensitivity.

Immunogen

A portion of amino acids 337-365 from the human protein was used as the immunogen for the Glucosylceramidase beta antibody.

Storage

Aliquot the Glucosylceramidase beta antibody and store frozen at -20oC or colder. Avoid repeated freeze-thaw cycles.